



Order: (888)-282-5810 (Phone)
(818)-707-0392 (Fax)
order@abiocode.com
Web: www.Abiocode.com

PKMYT1 (N) Antibody, Rabbit Polyclonal

Cat#: R2671-1

Quantity: 100 ul

Predicted | Observed M.W.: 55 | 60 kDa

Lot#: Refer to vial

Application: WB

Uniprot ID: Q99640

Background:

PKMYT1 acts as a negative regulator of entry into mitosis (G2 to M transition) by phosphorylation of the CDK1 kinase specifically when CDK1 is complexed to cyclins. PKMYT1 mediates phosphorylation of CDK1 predominantly on 'Thr-14'. PKMYT1 is also involved in Golgi fragmentation. PKMYT1 may be involved in phosphorylation of CDK1 on 'Tyr-15' to a lesser degree; however tyrosine kinase activity is unclear and may be indirect. PKMYT1 may be a downstream target of Notch signaling pathway during eye development.

Other Names:

Myt1 kinase, MYT1

Source and Purity:

Rabbit polyclonal antibodies were produced by immunizing animals with a GST-fusion protein containing the N-terminal region of human PKMYT1. Antibodies were purified by affinity purification using immunogen.

Storage Buffer and Condition:

Supplied in 1 x PBS (pH 7.4), 100 ug/ml BSA, 40% Glycerol, 0.01% NaN₃. Store at -20 °C. Stable for 6 months from date of receipt.

Species Specificity:

Human

Tested Applications:

WB: 1:1,000-1:3,000 (detect endogenous protein*)

*: The apparent protein size on WB may be different from the calculated M.W. due to modifications.

Product Data:

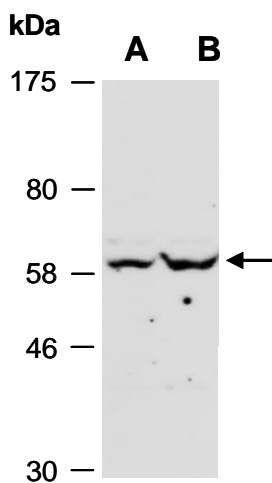


Fig 1. Western blot of total cell extracts from (A) human HeLa, (B) human Jurkat; using anti-PKMYT1 (N) (R2671-1) at RT for 2 h.