



Order: (888)-282-5810 (Phone)
(818)-707-0392 (Fax)
order@abiocode.com
Web: www.Abiocode.com

CRK (C3) Antibody, Rabbit Polyclonal

Cat#: R0520-5

Quantity: 100 ul

Predicted | Observed M.W.: 34 | 52 kDa

Lot#: Refer to vial

Application: WB

Uniprot ID: P46108

Background:

CRK is a member of an adapter protein family that binds to several tyrosin-phosphorylated proteins. CRK has several SH2 and SH3 domains and is involved in several signaling pathways, recruiting cytoplasmic proteins in the vicinity of tyrosin kinase through SH2-phosphotyrosin interaction. The N-terminal SH2 domain of this protein functions as a positive regulator of transformation whereas the C-terminal SH3 domain functions as a negative regulator of transformation. The matured CRK are located in cytoplasm and cell membrane.

Other Names:

Adapter molecule crk, Proto-oncogene c-Crk, p38

Source and Purity:

Rabbit polyclonal antibodies were produced by immunizing animals with a GST-fusion protein containing the C-terminal region of human CRK. Antibodies were purified by affinity purification using immunogen.

Storage Buffer and Condition:

Supplied in 1 x PBS (pH 7.4), 100 ug/ml BSA, 40% Glycerol, 0.01% NaN₃. Store at -20 °C. Stable for 6 months from date of receipt.

Species Specificity:

Human, Mouse

Tested Applications:

WB: 1:1,000-1:3,000 (detect endogenous protein*)

*: The apparent protein size on WB may be different from the calculated M.W. due to modifications.

Product Data:

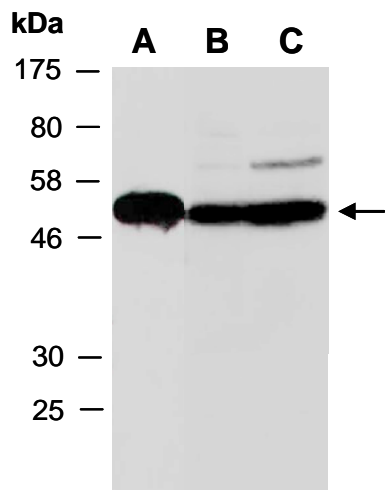


Fig 1. Western blot of total cell extracts from (A) mouse brain, (B) human HeLa, (C) human Jurkat; using anti-CRK (C3) (R0520-5) at RT for 2 h.