



Order: (888)-282-5810 (Phone)
(818)-707-0392 (Fax)
order@abiocode.com
Web: www.Abiocode.com

ENPP1 (C) Antibody, Rabbit Polyclonal

Cat#: R0557-2

Quantity: 100 ul

Predicted | Observed M.W.: 105 kDa

Lot#: Refer to vial

Application: WB

Uniprot ID: P22413

Background:

ENPP1 is a type II transmembrane glycoprotein comprising two identical disulfide-bonded subunits. ENPP1 has broad specificity and cleaves a variety of substrates, including phosphodiester bonds of nucleotides and nucleotide sugars and pyrophosphate bonds of nucleotides and nucleotide sugars. ENPP1 may function to hydrolyze nucleoside 5' triphosphates to their corresponding monophosphates and may also hydrolyze diadenosine polyphosphates. Defects in ENPP1 are a cause of increased susceptibility for ossification of the posterior longitudinal ligament of the spine and arterial calcification of infancy, generalized, type 1. Defects in ENPP1 are also associated with obesity, glucose intolerance, and type II diabetes non-insulin dependent, and the cause of rickets hypophosphatemic autosomal recessive type 2.

Other Names:

Membrane component chromosome 6 surface marker 1, Phosphodiesterase I/nucleotide pyrophosphatase 1, Plasma-cell membrane glycoprotein PC-1, M6S1, NPPS, PC1, PDNP1, PCA1

Source and Purity:

Rabbit polyclonal antibodies were produced by immunizing animals with a GST-fusion protein containing the C-terminal region of human ENPP1. Antibodies were purified by affinity purification using immunogen.

Storage Buffer and Condition:

Supplied in 1 x PBS (pH 7.4), 100 ug/ml BSA, 40% Glycerol, 0.01% NaN₃. Store at -20 °C. Stable for 6 months from date of receipt.

Species Specificity:

Human

Tested Applications:

WB: 1:1,000-1:3,000 (detect endogenous protein*)

*: The apparent protein size on WB may be different from the calculated M.W. due to modifications.

Product Data:

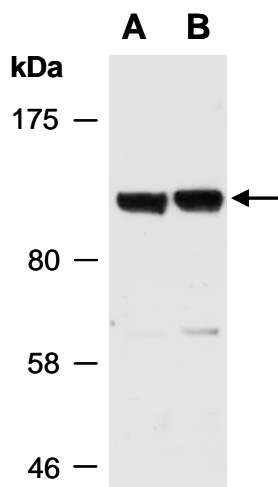


Fig 1. Western blot of total cell extracts from (A) human HeLa, (B) human Jurkat; using anti-ENPP1 (C) (R0557-2) at RT for 2 h.