



Order: (888)-282-5810 (Phone)
(818)-707-0392 (Fax)
order@abiocode.com
Web: www.Abiocode.com

PPP2R1B (C) Antibody, Rabbit Polyclonal

Cat#: R2976-2

Quantity: 100 ul

Predicted | Observed M.W.: 66 | 78 kDa

Lot#: Refer to vial

Application: WB

Uniprot ID: P30154

Background:

PPP2R1B is one of the four major Ser/Thr phosphatases, and it is implicated in the negative control of cell growth and division. It consists of a common heteromeric core enzyme, which is composed of a catalytic subunit and a constant regulatory subunit that associates with a variety of regulatory subunits. Mutations in PPP2R1B have been associated with some lung and colon cancers.

Other Names:

PP2A subunit A isoform PR65-beta, PP2A subunit A isoform R1-beta, PP2A-Abeta, PR65B

Source and Purity:

Rabbit polyclonal antibodies were produced by immunizing animals with a GST-fusion protein containing the C-terminal region of human PPP2R1B. Antibodies were purified by affinity purification using immunogen.

Storage Buffer and Condition:

Supplied in 1 x PBS (pH 7.4), 100 ug/ml BSA, 40% Glycerol, 0.01% NaN₃. Store at -20 °C. Stable for 6 months from date of receipt.

Species Specificity:

Human, Mouse

Tested Applications:

WB: 1:1,000-1:3,000 (detect endogenous protein*)

*: The apparent protein size on WB may be different from the calculated M.W. due to modifications.

Product Data:

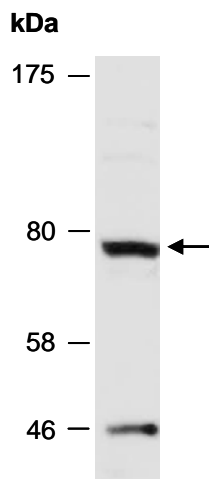


Fig 1. Western blot of total cell extracts from mouse brain, using anti-PPP2R1B (C) (R2976-2) at RT for 2 h.