



Order: (888)-282-5810 (Phone)
(818)-707-0392 (Fax)
order@abiocode.com
Web: www.Abiocode.com

MYBL2 (N) Antibody, Rabbit Polyclonal

Cat#: R2198-1

Quantity: 100 ul

Predicted | Observed M.W.: 79 | 100 kDa

Lot#: Refer to vial

Application: WB

Uniprot ID: P10244

Background:

Myb-like protein 2 (MYBL2) is a transcription factor involved in the regulation of cell survival, proliferation and differentiation. MYBL2 transactivates the expression of the CLU gene. It is also a component of the DREAM complex (also named LINC complex) at least composed of E2F4, E2F5, LIN9, LIN37, LIN52, LIN54, MYBL1, MYBL2, RBL1, RBL2, RBBP4, TFDP1 and TFDP2. The complex exists in quiescent cells where it represses cell cycle-dependent genes. It dissociates in S phase when LIN9, LIN37, LIN52 and LIN54 form a subcomplex that binds to MYBL2.

Other Names:

Myb-related protein B, B-Myb, Myb-like protein 2, BMYB

Source and Purity:

Rabbit polyclonal antibodies were produced by immunizing animals with a GST-fusion protein containing the N-terminal region of human MYBL2. Antibodies were purified by affinity purification using immunogen.

Storage Buffer and Condition:

Supplied in 1 x PBS (pH 7.4), 100 ug/ml BSA, 40% Glycerol, 0.01% NaN₃. Store at -20 °C. Stable for 6 months from date of receipt.

Tested Applications:

WB: 1:1,000-1:3,000 (detect endogenous protein*)

*: The apparent protein size on WB may be different from the calculated M.W. due to modifications.

Species Specificity:

Human, Mouse

Product Data:

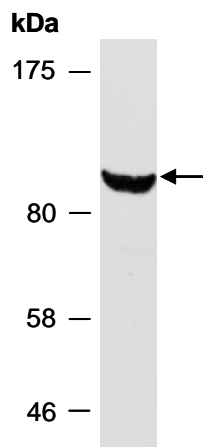


Fig 1. Western blot of total cell extracts from mouse brain, using anti-MYBL2 (N) (R2198-1) at RT for 2 h.