



Order: (888)-282-5810 (Phone)  
(818)-707-0392 (Fax)  
[order@abiocode.com](mailto:order@abiocode.com)  
Web: [www.Abiocode.com](http://www.Abiocode.com)

---

## **RAN (C) Antibody, Rabbit Polyclonal**

**Cat#: R2254-2**

**Quantity: 100 ul**

**Predicted | Observed M.W.: 24 kDa**

**Lot#: Refer to vial**

**Application: WB**

**Uniprot ID: P62826**

### **Background:**

Ras-related nuclear protein (RAN) belongs to the small GTPase superfamily. RAN is a GTP-binding protein involved in nucleocytoplasmic transport, and is required for the import of protein into the nucleus and also for RNA export. RAN is also involved in chromatin condensation and the control of cell cycle. The complex of RAN and BIRC5/ survivin plays a role in mitotic spindle formation by serving as a physical scaffold to help deliver the RAN effector molecule TPX2 to microtubules. RAN also enhances AR-mediated transactivation while acts as a negative regulator of the kinase activity of VRK1 and VRK2.

### **Other Names:**

GTP-binding nuclear protein Ran, Androgen receptor-associated protein 24, GTPase Ran, Ras-like protein TC4, Ras-related nuclear protein, ARA24

### **Source and Purity:**

Rabbit polyclonal antibodies were produced by immunizing animals with a GST-fusion protein containing the C-terminal region of human RAN. Antibodies were purified by affinity purification using immunogen.

### **Storage Buffer and Condition:**

Supplied in 1 x PBS (pH 7.4), 100 ug/ml BSA, 40% Glycerol, 0.01% NaN<sub>3</sub>. Store at -20 °C. Stable for 6 months from date of receipt.

### **Species Specificity:**

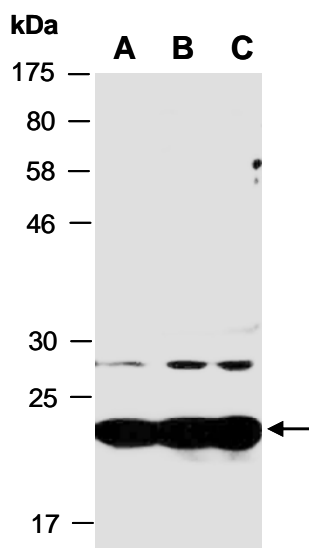
Human, Mouse

### **Tested Applications:**

WB: 1:1,000-1:3,000 (detect endogenous protein\*)

\*: The apparent protein size on WB may be different from the calculated M.W. due to modifications.

**Product Data:**



**Fig 1.** Western blot of total cell extracts from (A) mouse thymus, (B) human HeLa, (C) human Jurkat, using anti-RAN (C) (R2254-2) at RT for 2 h.