



Order: (888)-282-5810 (Phone)
(818)-707-0392 (Fax)
order@abiocode.com
Web: www.Abiocode.com

CCNB2 (C) Antibody, Rabbit Polyclonal

Cat#: R1552-2

Quantity: 100 ul

Predicted | Observed M.W.: 45 kDa

Lot#: Refer to vial

Application: WB

Uniprot ID: O95067

Background:

CCNB2 is a member of the cyclin family, specifically the B-type cyclins. CCNB2 associate with p34cdc2 and are essential components of the cell cycle regulatory machinery. CCNB2 co-localizes with microtubules, whereas cyclin B2 is primarily associated with the Golgi region. CCNB2 also binds to transforming growth factor beta RII and thus cyclin B2/cdc2 may play a key role in transforming growth factor beta-mediated cell cycle control.

Other Names:

G2/mitotic-specific cyclin-B2, HsT17299

Source and Purity:

Rabbit polyclonal antibodies were produced by immunizing animals with a GST-fusion protein containing the C-terminal region of human CCNB2. Antibodies were purified by affinity purification using immunogen.

Storage Buffer and Condition:

Supplied in 1 x PBS (pH 7.4), 100 ug/ml BSA, 40% Glycerol, 0.01% NaN₃. Store at -20 °C. Stable for 6 months from date of receipt.

Species Specificity:

Human, Mouse

Tested Applications:

WB: 1:1,000-1:3,000 (detect endogenous protein*)

*: The apparent protein size on WB may be different from the calculated M.W. due to modifications.

Product Data:

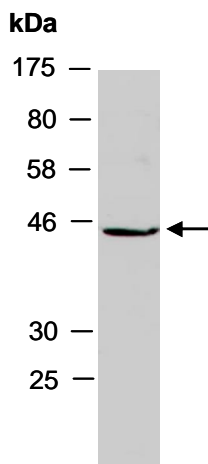


Fig 1. Western blot of total cell extracts from mouse brain, using anti-CCNB2 (C) (R1552-2) at RT for 2 h.