



Order: (888)-282-5810 (Phone)
(818)-707-0392 (Fax)
order@abiocode.com
Web: www.Abiocode.com

STK38L (N) Antibody, Rabbit Polyclonal

Cat#: R2205-1

Quantity: 100 ul

Predicted | Observed M.W.: 54 kDa

Lot#: Refer to vial

Application: WB

Uniprot ID: Q9Y2H1

Background:

Serine/threonine-protein kinase 38-like (STK38L) belongs to the protein kinase superfamily, AGC Ser/Thr protein kinase family, and it contains one protein kinase domain and one AGC-kinase C-terminal domain. STK38L is involved in the regulation of structural processes in differentiating and mature neuronal cells. STK38L is ubiquitously expressed.

Other Names:

Serine/threonine-protein kinase 38-like, NDR2 protein kinase, Nuclear Dbf2-related kinase 2, KIAA0965, NDR2

Source and Purity:

Rabbit polyclonal antibodies were produced by immunizing animals with a GST-fusion protein containing the N-terminal region of human STK38L. Antibodies were purified by affinity purification using immunogen.

Storage Buffer and Condition:

Supplied in 1 x PBS (pH 7.4), 100 ug/ml BSA, 40% Glycerol, 0.01% NaN₃. Store at -20 °C. Stable for 6 months from date of receipt.

Species Specificity:

Human, Mouse

Tested Applications:

WB: 1:1,000-1:3,000 (detect endogenous protein*)

*: The apparent protein size on WB may be different from the calculated M.W. due to modifications.

Product Data:

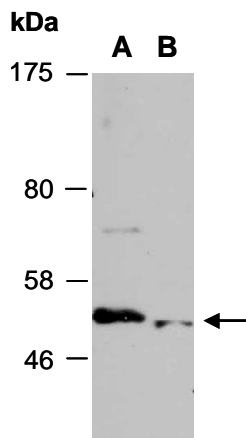


Fig 1. Western blot of total cell extracts from (A) mouse brain, (B) mouse thymus, using anti-STK38L (N) (R2205-1) at RT for 2 h.