



Order: (888)-282-5810 (Phone)
(818)-707-0392 (Fax)
order@abiocode.com
Web: www.Abiocode.com

MUC18 (C) Antibody, Rabbit Polyclonal

Cat#: R2973-2

Quantity: 100 ul

Predicted | Observed M.W.: 72 | 140 kDa

Lot#: Refer to vial

Application: WB

Uniprot ID: P43121

Background:

MUC18 is also known as Melanoma cell adhesion molecule (MCAM), which is a single-pass type I membrane protein. MUC18 plays a role in cell adhesion, and in cohesion of the endothelial monolayer at intercellular junctions in vascular tissue. Its expression may allow melanoma cells to interact with cellular elements of the vascular system, thereby enhancing hematogeneous tumor spread. MUC18 may be an adhesion molecule active in neural crest cells during embryonic development. MUC18 acts as a surface receptor that triggers tyrosine phosphorylation of FYN and PTK2/FAK1, and a transient increase in the intracellular calcium concentration.

Other Names:

Cell surface glycoprotein MUC18, Cell surface glycoprotein P1H12, Melanoma cell adhesion molecule, Melanoma-associated antigen A32, Melanoma-associated antigen MUC18, S-endo 1 endothelial-associated antigen, CD146, MCAM

Source and Purity:

Rabbit polyclonal antibodies were produced by immunizing animals with a GST-fusion protein containing the C-terminal region of human MUC18. Antibodies were purified by affinity purification using immunogen.

Storage Buffer and Condition:

Supplied in 1 x PBS (pH 7.4), 100 ug/ml BSA, 40% Glycerol, 0.01% NaN₃. Store at -20 °C. Stable for 6 months from date of receipt.

Tested Applications:

WB: 1:1,000-1:3,000 (detect endogenous protein*)

*: The apparent protein size on WB may be different from the calculated M.W. due to modifications.

Species Specificity:

Human

Product Data:

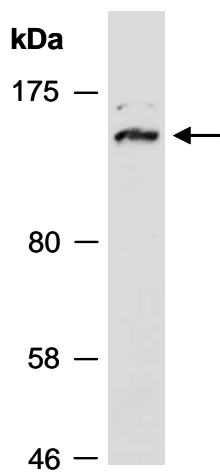


Fig 1. Western blot of total cell extracts from human HeLa; using anti-MUC18 (C) (R2973-2) at RT for 2 h.