



Order: (888)-282-5810 (Phone)  
(818)-707-0392 (Fax)  
[order@abiocode.com](mailto:order@abiocode.com)  
Web: [www.Abiocode.com](http://www.Abiocode.com)

---

## **Myc-tag Antibody, Rabbit Polyclonal**

**Cat#: R0112-1**

**Quantity: 100 ul**

**Predicted M.W.:** contingent on protein tagged

**Lot#:** Refer to vial

**Application:** WB

**Uniprot ID:** N/A

### **Background:**

A Myc-tag is a polypeptide protein tag that was derived from a short region of the c-Myc gene. It is an epitope tag that is usually cloned into a target DNA sequence of interest. An anti-epitope tag antibody can then be used to detect the tagged protein.

### **Other Names:**

c-Myc tag, c-Myc epitope tag

### **Source and Purity:**

Rabbit polyclonal antibodies were produced by immunizing animals with a GST-fusion protein containing a short region of the c-Myc gene product. Antibodies were purified by affinity purification using immunogen.

### **Storage Buffer and Condition:**

Supplied in 1 x PBS (pH 7.4), 100 ug/ml BSA, 40% Glycerol, 0.01% NaN<sub>3</sub>. Store at -20 °C. Stable for 6 months from date of receipt.

### **Species Specificity:**

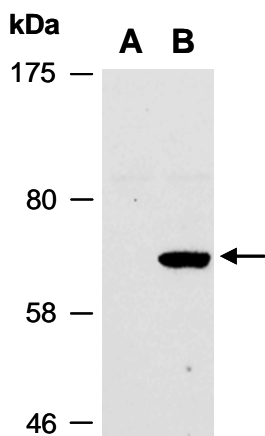
N/A

### **Recommended Conditions (tested):**

WB: 1:1,000-1:5,000 (detect endogenous protein\*)

\*: The apparent protein size on WB may be different from the calculated M.W. due to modifications and the addition of the Myc-tag.

**Product Data:**



**Fig 1.** Western blot of total cell extracts from human 293T (A) untransfected, (B) transfected with a Myc-tagged protein, using anti-Myc-tag (R0112-1) at RT for 2 h.