



Order: (888)-282-5810 (Phone)
(818)-707-0392 (Fax)
order@abiocode.com
Web: www.Abiocode.com

SKI (N) Antibody, Rabbit Polyclonal

Cat#: R1171-1

Quantity: 100 ul

Predicted | Observed M.W.: 80 | 100 kDa

Lot#: Refer to vial

Application: WB

Uniprot ID: P12755

Background:

SKI a nuclear protooncprotein that is associated with tumors at high cellular concentrations. SKI has been shown to interfere with normal cellular functioning by both directly impeding expression of certain genes inside the nucleus of the cell as well as disrupting signaling proteins that activate genes. SKI negatively regulates transforming growth factor-beta by directly interacting with Smads and repressing the transcription of TGF-beta responsive genes. This has been associated with cancer due to the large number of roles that peptide growth factors, of which TGF-beta are a subfamily, play in regulating cellular functions such as cell proliferation, apoptosis, specification, and developmental fate.

Other Names:

Proto-oncogene c-Ski

Source and Purity:

Rabbit polyclonal antibodies were produced by immunizing animals with a GST-fusion protein containing the N-terminal of human SKI. Antibodies were purified by affinity purification using immunogen.

Storage Buffer and Condition:

Supplied in 1 x PBS (pH 7.4), 100 ug/ml BSA, 40% Glycerol, 0.01% NaN₃. Store at -20 °C. Stable for 6 months from date of receipt.

Species Specificity:

Human, Mouse

Tested Applications:

WB: 1:1,000-1:3,000 (detect endogenous protein*)

*: The apparent protein size on WB may be different from the calculated M.W. due to modifications.

Product Data:

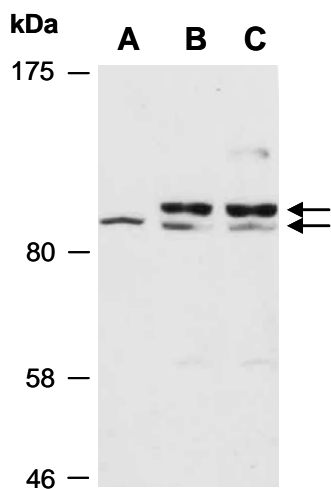


Fig 1. Western blot of total cell extracts from (A) mouse thymus, (B) human HeLa, (C) human Jurkat, using anti-SKI (N) (R1171-1) at RT for 2 h.