



Order: (888)-282-5810 (Phone)
(818)-707-0392 (Fax)
order@abiocode.com
Web: www.Abiocode.com

PELI3 (N) Antibody, Rabbit Polyclonal

Cat#: R1809-1

Quantity: 100 ul

Predicted | Observed M.W.: 51 | 56 kDa

Lot#: Refer to vial

Application: WB

Uniprot ID: Q8N2H9

Background:

PELI3 catalyzes the covalent attachment of ubiquitin moieties onto substrate proteins. PELI3 is involved in the TLR and IL-1 signaling pathways via interaction with the complex containing IRAK kinases and TRAF6. PELI3 mediates 'Lys-63'-linked polyubiquitination of IRAK1. PELI3 can activate AP1/JUN and ELK1. Not required for NF-kappa-B activation. PELI3 is highly expressed in brain, heart and testis, and at lower level in kidney, liver, lung, placenta, small intestine, spleen and stomach.

Other Names:

MGC35521

Source and Purity:

Rabbit polyclonal antibodies were produced by immunizing animals with a GST-fusion protein containing the N-terminal region of human PELI3. Antibodies were purified by affinity purification using immunogen.

Storage Buffer and Condition:

Supplied in 1 x PBS (pH 7.4), 100 ug/ml BSA, 40% Glycerol, 0.01% NaN₃. Store at -20 °C. Stable for 6 months from date of receipt.

Species Specificity:

Human, Mouse

Tested Applications:

WB: 1:1,000-1:3,000 (detect endogenous protein*)

*: The apparent protein size on WB may be different from the calculated M.W. due to modifications.

Product Data:

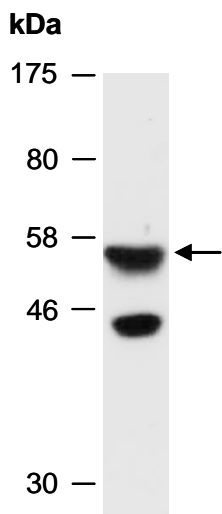


Fig 1. Western blot of total cell extracts from mouse brain; using anti-PELI3 (N) (R1809-1) at RT for 2 h.