



Order: (888)-282-5810 (Phone)
(818)-707-0392 (Fax)
order@abiocode.com
Web: www.Abiocode.com

PPP2CA (N) Antibody, Rabbit Polyclonal

Cat#: R2373-1

Quantity: 100 ul

Predicted | Observed M.W.: 36 | 30 kDa

Lot#: Refer to vial

Application: WB

Uniprot ID: P67775

Background:

PPP2CA, serine/threonine-protein phosphatase 2A catalytic subunit alpha isoform, is the major phosphatase for microtubule-associated proteins (MAPs). PPP2CA can modulate the activity of phosphorylase B kinase casein kinase 2, mitogen-stimulated S6 kinase, and MAP-2 kinase. PPP2CA cooperates with SGOL2 to protect centromeric cohesin from separase-mediated cleavage in oocytes specifically during meiosis I. PPP2CA can dephosphorylate SV40 large T antigen and p53/TP53. PPP2CA activates RAF1 by dephosphorylating it at 'Ser-259'.

Other Names:

Replication protein C, PP2Calpha, PP2A alpha, PP2A-alpha

Source and Purity:

Rabbit polyclonal antibodies were produced by immunizing animals with a GST-fusion protein containing the C-terminal region of human PPP2CA. Antibodies were purified by affinity purification using immunogen.

Storage Buffer and Condition:

Supplied in 1 x PBS (pH 7.4), 100 ug/ml BSA, 40% Glycerol, 0.01% NaN₃. Store at -20 °C. Stable for 6 months from date of receipt.

Species Specificity:

Human, Mouse

Tested Applications:

WB: 1:1,000-1:3,000 (detect endogenous protein*)

*: The apparent protein size on WB may be different from the calculated M.W. due to modifications.

Product Data:

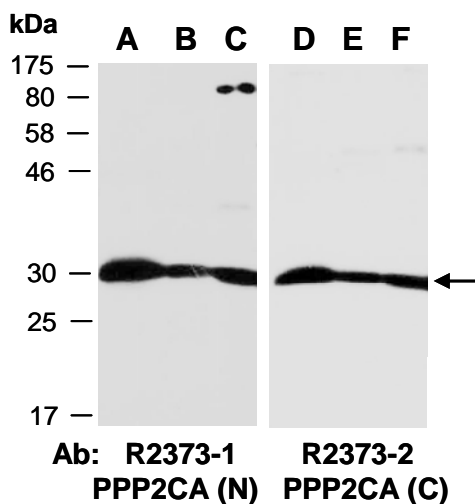


Fig 1. Western blot of total cell extracts from (A, D) mouse brain, (B, E) mouse thymus, (C, F) human HeLa; using 2 independent Abs against 2 distinct regions of human PPP2CA at RT for 2 h.