



Order: (888)-282-5810 (Phone)
(818)-707-0392 (Fax)
order@abiocode.com
Web: www.Abiocode.com

BTC (C) Antibody, Rabbit Polyclonal

Cat#: R0140-3

Quantity: 100 ul

Predicted M.W.: 20 kDa

Lot#: Refer to vial

Application: ELISA, WB

Uniprot ID: P35070

Background:

Betacellulin (BTC) is a member of the EGF family of growth factors. It is initially synthesized as a transmembrane precursor before undergoing proteolytic cleavage to its mature form. It is considered to be a potent mitogen for retinal pigment epithelial cells and vascular smooth muscle cells. It is a ligand for the EGF receptor.

Other Names:

Probetacellulin, OTTHUMP00000219057

Source and Purity:

Rabbit polyclonal antibodies were produced by immunizing animals with a GST-fusion protein containing the C-terminal region of human BTC. Antibodies were purified by affinity purification using immunogen.

Storage Buffer and Condition:

Supplied in 1 x PBS (pH 7.4), 100 ug/ml BSA, 40% Glycerol, 0.01% NaN₃. Store at -20 °C. Stable for 6 months from date of receipt.

Species Specificity:

Human

Recommended Conditions (tested):

WB: 1:1,000-1:5,000 (detect recombinant protein)

ELISA: 1:1,000- 1:10,000 (detect native recombinant protein in a direct ELISA assay).
Suitable for using as ELISA capture or detection antibodies.

Product Data:

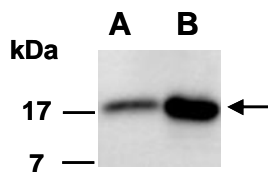


Fig 1. Western blot of the recombinant human BTC protein (A: 10 ng, B: 60 ng), using Ab (R0140-3) at RT for 2 h.