



Order: (888)-282-5810 (Phone)
(818)-707-0392 (Fax)
order@abiocode.com
Web: www.Abiocode.com

DCLK1 (C) Antibody, Rabbit Polyclonal

Cat#: R0915-2

Quantity: 100 ul

Predicted | Observed MW: 82 kDa

Lot#: Refer to vial

Application: WB

Uniprot ID: O15075

Background:

Serine/threonine-protein kinase DCLK1 (DCAMKL1) belongs to the protein kinase superfamily. It is a probable kinase that may be involved in a calcium-signaling pathway controlling neuronal migration in the developing brain. DCLK1 is also involved in several different cellular processes, including retrograde transport, neuronal apoptosis and neurogenesis. This gene is up-regulated by brain-derived neurotrophic factor and associated with memory and general cognitive abilities.

Other Names:

Serine/threonine-protein kinase DCLK1, Doublecortin domain-containing protein 3A, Doublecortin-like and CAM kinase-like 1, Doublecortin-like kinase 1, DCAMKL1, DCDC3A, KIAA0369

Source and Purity:

Rabbit polyclonal antibodies were produced by immunizing animals with a GST-fusion protein containing the C-terminal region of human DCLK1. Antibodies were purified by affinity purification using immunogen.

Storage Buffer and Condition:

Supplied in 1 x PBS (pH 7.4), 100 ug/ml BSA, 40% Glycerol, 0.01% NaN₃. Store at -20 °C. Stable for 6 months from date of receipt.

Species Specificity:

Human, Mouse

Tested Applications:

WB: 1:500-1:2,000 (detect endogenous protein*)

*: The apparent protein size on WB may be different from the calculated M.W. due to modifications.

Product Data:

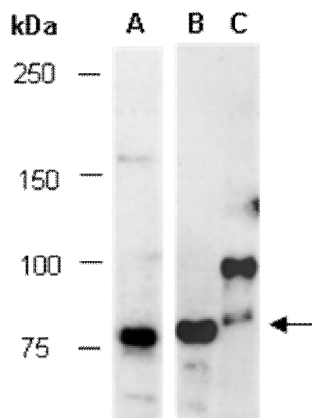


Fig 1. Western blot of total cell extracts from (A,C) mouse brain, (B) human GBM; using 2 independent Abs against 2 distinct regions of human DCLK1 [A: DCLK1 (M)(R0915-1); B,C: DCLK1 (C)(R0915-2)] at RT for 2 h.