



Order: (888)-282-5810 (Phone)  
(818)-707-0392 (Fax)  
[order@abiocode.com](mailto:order@abiocode.com)  
Web: [www.Abiocode.com](http://www.Abiocode.com)

---

## **MLXIPL (N2) Antibody, Rabbit Polyclonal**

**Cat#: R2556-2**

**Quantity: 100 ul**

**Predicted | Observed M.W.: 95 | 120 kDa**

**Lot#: Refer to vial**

**Application: WB**

**Uniprot ID: Q99MZ3**

### **Background:**

MLX-interacting protein-like (MLXIPL) is a nuclear protein involved in transcriptional regulation. MLXIPL contains 1 basic helix-loop-helix (bHLH) domain and binds to the canonical and non-canonical E box sequences 5'-CACGTG-3'. MLXIPL is a transcriptional repressor.

### **Other Names:**

Carbohydrate-responsive element-binding protein, ChREBP, MLX interactor, MLX-interacting protein-like, Williams-Beuren syndrome chromosomal region 14 protein homolog, Mio, Wbscr14

### **Source and Purity:**

Rabbit polyclonal antibodies were produced by immunizing animals with a GST-fusion protein containing the N-terminal region of mouse MLXIPL. Antibodies were purified by affinity purification using immunogen.

### **Storage Buffer and Condition:**

Supplied in 1 x PBS (pH 7.4), 100 ug/ml BSA, 40% Glycerol, 0.01% NaN<sub>3</sub>. Store at -20 °C. Stable for 6 months from date of receipt.

### **Species Specificity:**

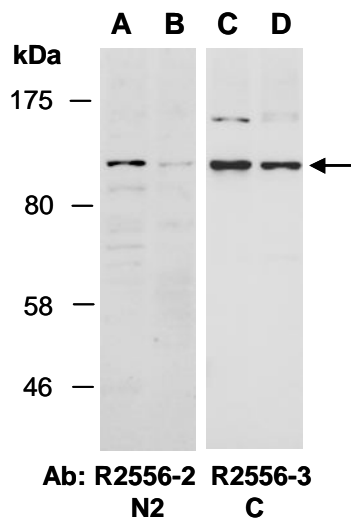
Human, Mouse

### **Tested Applications:**

WB: 1:1,000-1:3,000 (detect endogenous protein\*)

\*: The apparent protein size on WB may be different from the calculated M.W. due to modifications.

**Product Data:**



**Fig 1.** Western blot of total cell extracts from (A,C) human HeLa, (B,D) human Jurkat; using 2 independent Abs against 2 distinct regions of mouse MLXIPL at RT for 2 h.