



Order: (888)-282-5810 (Phone)
(818)-707-0392 (Fax)
order@abiocode.com
Web: www.Abiocode.com

TET1 (N1) Antibody, Rabbit Polyclonal

Cat#: R1084-4

Quantity: 100 ul

Predicted M.W.: 219 kDa

Lot#: Refer to vial

Application: WB, IP

Uniprot ID: Q3URK3

Background:

TET1 is a methylcytosine dioxygenase that catalyzes the conversion of the modified genomic base 5-methylcytosine (5mC) into 5-hydroxymethylcytosine (5hmC). Methylation at the C5 position of cytosine bases is an epigenetic modification of the mammalian genome which plays an important role in transcriptional regulation. TET1 might initiate a process leading to cytosine demethylation through deamination into 5-hydroxymethyluracil (5hmU) and subsequent replacement by unmethylated cytosine by the base excision repair system. TET1 preferentially binds to CpG-rich sequences at promoters of both transcriptionally active and polycomb-repressed genes. By controlling the levels of 5mC and 5hmC at gene promoters, it may regulate the gene silencing induced by cytosine methylation. It has been shown that TET1 plays an important role in embryonic stem cells maintenance and regulating the balance between pluripotency and lineage commitment.

Other Names:

Methylcytosine dioxygenase TET1, CXXC-type zinc finger protein 6, Leukemia-associated protein with a CXXC domain, Ten-eleven translocation 1 gene protein, CXXC6, KIAA1676, LCX

Source and Purity:

Rabbit polyclonal antibodies were produced by immunizing animals with a GST-fusion protein containing the N-terminal region of mouse TET1, and provided as whole antiserum.

Storage Buffer and Condition:

Supplied as whole rabbit serum containing 30% Glycerol and 0.01% NaN₃. Store at -20°C. Stable for 6 months from date of receipt.

Species Specificity:

Human, Mouse

Tested Applications:

WB: 1:1,000-1:3,000 (detect endogenous protein*)

IP: 1:50 -1:100

*: The apparent protein size on WB may be different from the calculated M.W. due to modifications.

For research use only. Not for therapeutic or diagnostic purposes.
Abiocode, Inc., 29397 Agoura Rd., Ste 106, Agoura Hills, CA 91301

Product Data:

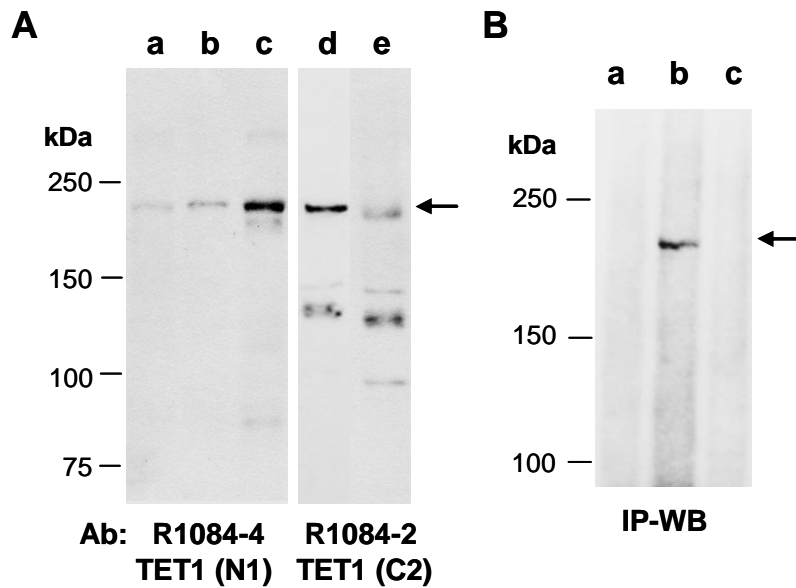


Fig 1. (A) Western blot of total cell extracts from a. human iPS; b. human Jurkat; c and d. mouse thymus; e. mouse fetal brain, using 2 independent Abs against 2 distinct regions of human TET1 as indicated at RT for 2 h. **(B)** IP-Western. Total cell extracts from mouse thymus were immunoprecipitated with a. IgG, b. anti-TET1 (R1084-4), c. anti-TET3 (R1092-1); followed by WB with monoclonal anti-TET1 (M1084-1) at RT for 2 h.