



Order: (888)-282-5810 (Phone)  
(818)-707-0392 (Fax)  
[order@abiocode.com](mailto:order@abiocode.com)  
Web: [www.Abiocode.com](http://www.Abiocode.com)

---

## **SYN3 (C1) Antibody, Rabbit Polyclonal**

**Cat#: R2232-3**

**Quantity: 100 ul**

**Predicted | Observed M.W.: 63 | 73 kDa**

**Lot#: Refer to vial**

**Application: WB**

**Uniprot ID: Q8JZP2**

### **Background:**

Synapsin-3 (SYN3) is a member of the synapsin gene family. Synapsins encode neuronal phosphoproteins which associate with the cytoplasmic surface of synaptic vesicles. Synapsins have been implicated in synaptogenesis and the modulation of neurotransmitter release, suggesting a potential role in several neuropsychiatric diseases. SYN3 shares the synapsin family domain model, with domains A, C, and E exhibiting the highest degree of conservation. SYN3 also contains a unique domain J, located between domains C and E. Based on this gene's localization to 22q12.3, a possible schizophrenia susceptibility locus, and the established neurobiological roles of the synapsins, SYN3 may represent a candidate gene for schizophrenia.

### **Other Names:**

Synapsin-3, Synapsin III

### **Source and Purity:**

Rabbit polyclonal antibodies were produced by immunizing animals with a GST-fusion protein containing the C-terminal region of mouse SYN3. Antibodies were purified by affinity purification using immunogen.

### **Storage Buffer and Condition:**

Supplied in 1 x PBS (pH 7.4), 100 ug/ml BSA, 40% Glycerol, 0.01% NaN<sub>3</sub>. Store at -20 °C. Stable for 6 months from date of receipt.

### **Species Specificity:**

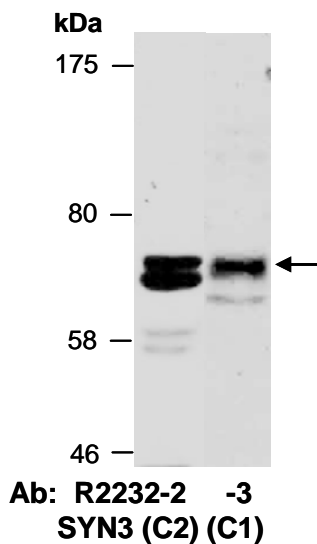
Mouse

### **Tested Applications:**

WB: 1:1,000-1:3,000 (detect endogenous protein\*)

\*: The apparent protein size on WB may be different from the calculated M.W. due to modifications.

**Product Data:**



**Fig 1.** Western blot of total cell extracts from mouse brain, using 2 independent Abs against 2 distinct C-terminal regions of SYN3 at RT for 2 h.