



Order: (888)-282-5810 (Phone)
(818)-707-0392 (Fax)
order@abiocode.com
Web: www.Abiocode.com

SETD1A (C) Antibody, Rabbit Polyclonal

Cat#: R0196-1

Quantity: 100 ul

Predicted | Observed M.W.: 186 | 250 kDa

Lot#: Refer to vial

Application: WB

Uniprot ID: O15047

Background:

SET1A is a component of a histone methyltransferase (HMT) complex that produces mono-, di-, and trimethylated histone H3 at Lys-4. The complex is the analog of the *S. cerevisiae* Set1/COMPASS complex. SETD1A specifically methylates Lys-4 of histone H3, but not if the neighboring Lys-9 residue is already methylated. H3 Lys-4 methylation represents a specific tag for epigenetic transcriptional activation. The non-overlapping localization of SETD1A with SETD1B suggests that SETD1A and SETD1B make non-redundant contributions to the epigenetic control of chromatin structure and gene expression.

Other Names:

Histone-lysine N-methyltransferase SETD1A, Lysine N-methyltransferase 2F, SET domain-containing protein 1A, hSET1A, Set1/Ash2 histone methyltransferase complex subunit SET1, KIAA0339, KMT2F, SET1, SET1A

Source and Purity:

Rabbit polyclonal antibodies were produced by immunizing animals with a GST-fusion protein containing the C-terminal region of human SETD1A. Antibodies were purified by affinity purification using immunogen.

Storage Buffer and Condition:

Supplied in 1 x PBS (pH 7.4), 100 ug/ml BSA, 40% Glycerol, 0.01% NaN₃. Store at -20 °C. Stable for 6 months from date of receipt.

Species Specificity:

Human

Tested Applications:

WB: 1:1,000-1:3,000 (detect endogenous protein*)

*: The apparent protein size on WB may be different from the calculated M.W. due to modifications.

Product Data:

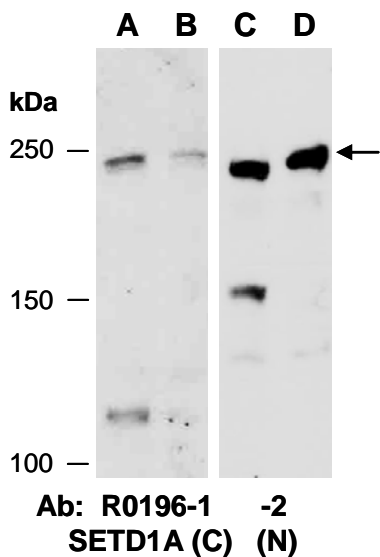


Fig 1. Western blot of total cell extracts from (A) human HeLa, (B) human Jurkat, using 2 independent Abs against 2 distinct regions of human SETD1A at RT for 2 h.