



Order: (888)-282-5810 (Phone)  
(818)-707-0392 (Fax)  
[order@abiocode.com](mailto:order@abiocode.com)  
Web: [www.Abiocode.com](http://www.Abiocode.com)

---

## MYH10 (C1) Antibody, Rabbit Polyclonal

**Cat#: R1042-1**

**Quantity: 100 ul**

**Predicted | Observed M.W.: 229 kDa**

**Lot#: Refer to vial**

**Application: WB**

**Uniprot ID: P35580**

### **Background:**

Myosin-10 (MYH10) is a cellular myosin that appears to play a role in cytokinesis, cell shape, and specialized functions such as secretion and capping. It is expressed in the cerebellum, cerebrum, retina, and spinal cord. MYH10 is involved with LARP6 in the stabilization of type I collagen mRNAs for CO1A1 and CO1A2.

### **Other Names:**

Myosin-10, Cellular myosin heavy chain, type B, Myosin heavy chain 10, Myosin heavy chain, non-muscle IIb, Non-muscle myosin heavy chain B, NMMHC-B, Non-muscle myosin heavy chain IIb, NMMHC II-b, NMMHC-IIb

### **Source and Purity:**

Rabbit polyclonal antibodies were produced by immunizing animals with a GST-fusion protein containing the C-terminal region of human MYH10. Antibodies were purified by affinity purification using immunogen.

### **Storage Buffer and Condition:**

Supplied in 1 x PBS (pH 7.4), 100 ug/ml BSA, 40% Glycerol, 0.01% NaN<sub>3</sub>. Store at -20 °C. Stable for 6 months from date of receipt.

### **Species Specificity:**

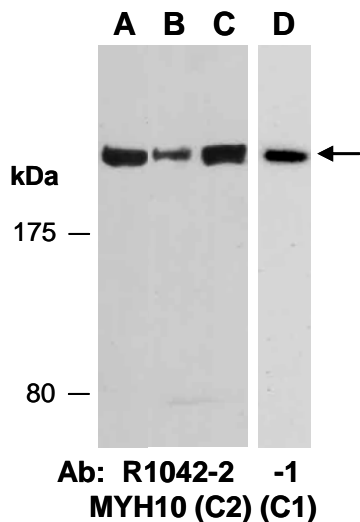
Human

### **Tested Applications:**

WB: 1:1,000-1:3,000 (detect endogenous protein\*)

\*: The apparent protein size on WB may be different from the calculated M.W. due to modifications.

**Product Data:**



**Fig 1.** Western blot of total cell extracts from (A, D) mouse brain, (B) human HeLa, (C) human Jurkat; using 2 independent Abs against 2 distinct C-terminal regions of human MYH10 at RT for 2 h.