



Order: (888)-282-5810 (Phone)  
(818)-707-0392 (Fax)  
[order@abiocode.com](mailto:order@abiocode.com)  
Web: [www.Abiocode.com](http://www.Abiocode.com)

---

## **SMC4 (C) Antibody, Rabbit Polyclonal**

**Cat#: R1503-2**

**Quantity: 100 ul**

**Predicted | Observed M.W.: 147 kDa**

**Lot#: Refer to vial**

**Application: WB**

**Uniprot ID: Q9NTJ3**

### **Background:**

Structural maintenance of chromosomes protein 4 (SMC4) is a central component of the condensin complex, which contains the SMC2 and SMC4 heterodimer, and three non SMC subunits that probably regulate the complex: BRRN1/CAPH, CNAP1/CAPD2 and CAPG. The condensin complex is required for conversion of interphase chromatin into mitotic-like condense chromosomes. The condensin complex probably introduces positive supercoils into relaxed DNA in the presence of type I topoisomerases and converts nicked DNA into positive knotted forms in the presence of type II topoisomerases.

### **Other Names:**

Structural maintenance of chromosomes protein 4, SMC protein 4, SMC-4, Chromosome-associated polypeptide C, hCAP-C, XCAP-C homolog, CAPC, SMC4L1

### **Source and Purity:**

Rabbit polyclonal antibodies were produced by immunizing animals with a GST-fusion protein containing the C-terminal region of human SMC4. Antibodies were purified by affinity purification using immunogen.

### **Storage Buffer and Condition:**

Supplied in 1 x PBS (pH 7.4), 100 ug/ml BSA, 40% Glycerol, 0.01% NaN<sub>3</sub>. Store at -20 °C. Stable for 6 months from date of receipt.

### **Species Specificity:**

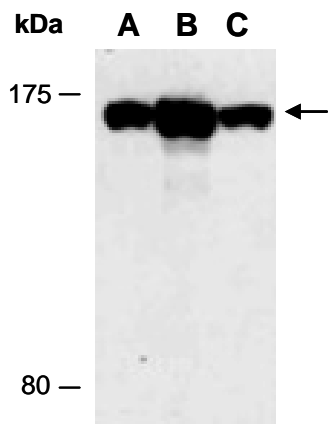
Human

### **Tested Applications:**

WB: 1:1,000-1:3,000 (detect endogenous protein\*)

\*: The apparent protein size on WB may be different from the calculated M.W. due to modifications.

**Product Data:**



**Fig 1.** Western blot of total cell extracts from (A) human HeLa, (B) human Jurkat, (C) human T47D; using anti-SMC4 (C) (R1503-2) at RT for 2 h.