



Order: (888)-282-5810 (Phone)  
(818)-707-0392 (Fax)  
[order@abiocode.com](mailto:order@abiocode.com)  
Web: [www.Abiocode.com](http://www.Abiocode.com)

---

## **CFL2 (N) Antibody, Rabbit Polyclonal**

**Cat#: R2170-1**

**Quantity: 100 ul**

**Predicted | Observed M.W.: 19 kDa**

**Lot#: Refer to vial**

**Application: WB**

**Uniprot ID: Q9Y281**

### **Background:**

CFL2 is an intracellular protein that is involved in the regulation of actin-filament dynamics. CFL2 is a major component of intranuclear and cytoplasmic actin rods. CFL2 can bind G- and F-actin in a 1:1 ratio of cofilin to actin, and it reversibly controls actin polymerization and depolymerization in a pH-dependent manner. Defects in CFL2 cause nemaline myopathy type 7, a form of congenital myopathy.

### **Other Names:**

Cofilin-2, Cofilin muscle isoform, COF2

### **Source and Purity:**

Rabbit polyclonal antibodies were produced by immunizing animals with a GST-fusion protein containing the N-terminal region of human CFL2. Antibodies were purified by affinity purification using immunogen.

### **Storage Buffer and Condition:**

Supplied in 1 x PBS (pH 7.4), 100 ug/ml BSA, 40% Glycerol, 0.01% NaN<sub>3</sub>. Store at -20 °C. Stable for 6 months from date of receipt.

### **Species Specificity:**

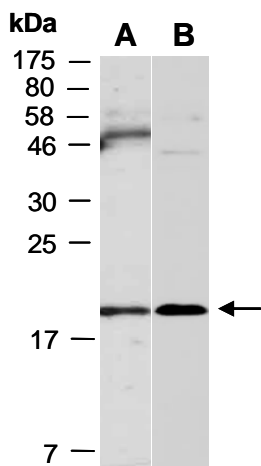
Human, Mouse

### **Tested Applications:**

WB: 1:1,000-1:3,000 (detect endogenous protein\*)

\*: The apparent protein size on WB may be different from the calculated M.W. due to modifications.

**Product Data:**



**Fig 1.** Western blot of total cell extracts from (A) mouse thymus, (B) human HeLa; using anti-CFL2 (N) (R2170-1) at RT for 2 h.