



Order: (888)-282-5810 (Phone)
(818)-707-0392 (Fax)
order@abiocode.com
Web: www.Abiocode.com

ZDHHC1 (C) Antibody, Rabbit Polyclonal

Cat#: R2221-2

Quantity: 100 ul

Predicted | Observed M.W.: 55 kDa

Lot#: Refer to vial

Application: WB

Uniprot ID: Q8WTX9

Background:

Probable palmitoyltransferase ZDHHC1 belongs to the DHHC palmitoyltransferase family. It is a multi-pass membrane protein that mediates palmitoyl acyl transferase activity. ZDHHC1 is expressed in high levels in the fetal lung, kidney, and heart and expressed in lower levels in the adult pancreas and lung.

Other Names:

Probable palmitoyltransferase ZDHHC1, DHHC domain-containing cysteine-rich protein 1, Zinc finger DHHC domain-containing protein 1, DHHC-1, Zinc finger protein 377, C16orf1, ZNF377

Source and Purity:

Rabbit polyclonal antibodies were produced by immunizing animals with a GST-fusion protein containing the C-terminal region of human ZDHHC1. Antibodies were purified by affinity purification using immunogen.

Storage Buffer and Condition:

Supplied in 1 x PBS (pH 7.4), 100 ug/ml BSA, 40% Glycerol, 0.01% NaN₃. Store at -20 °C. Stable for 6 months from date of receipt.

Species Specificity:

Human, Mouse

Tested Applications:

WB: 1:1,000-1:3,000 (detect endogenous protein*)

*: The apparent protein size on WB may be different from the calculated M.W. due to modifications.

Product Data:

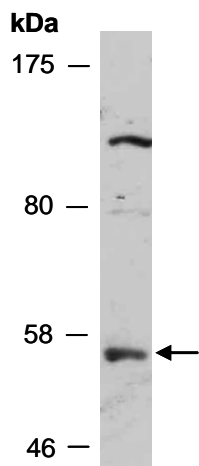


Fig 1. Western blot of total cell extracts from mouse thymus, using anti-ZDHHC1 (C) (R2221-2) at RT for 2 h.