



Order: (888)-282-5810 (Phone)
(818)-707-0392 (Fax)
order@abiocode.com
Web: www.Abiocode.com

ALDH2 (C2) Antibody, Rabbit Polyclonal

Cat#: R2239-2

Quantity: 100 ul

Predicted | Observed M.W.: 56 | 58, 65 kDa

Lot#: Refer to vial

Application: WB

Uniprot ID: P05091

Background:

Mitochondrial aldehyde dehydrogenase (ALDH2) belongs to the aldehyde dehydrogenase family. It is a homotetramer that is localized to the mitochondrial matrix. ALDH2 as an enzyme is responsible for alcohol metabolism through the oxidation of aldehyde to carboxylate. Genetic variation in ALDH2 is responsible for individual differences in response to alcohol consumption, especially ALDH2*2, which is associated with a high level of alcohol intoxication and low tolerance.

Other Names:

Aldehyde dehydrogenase, ALDH class 2, ALDH-E2, ALDHI, ALDM

Source and Purity:

Rabbit polyclonal antibodies were produced by immunizing animals with a GST-fusion protein containing the C-terminal region of human ALDH2. Antibodies were purified by affinity purification using immunogen.

Storage Buffer and Condition:

Supplied in 1 x PBS (pH 7.4), 100 ug/ml BSA, 40% Glycerol, 0.01% NaN₃. Store at -20 °C. Stable for 6 months from date of receipt.

Species Specificity:

Human

Tested Applications:

WB: 1:1,000-1:3,000 (detect endogenous protein*)

*: The apparent protein size on WB may be different from the calculated M.W. due to modifications.

Product Data:

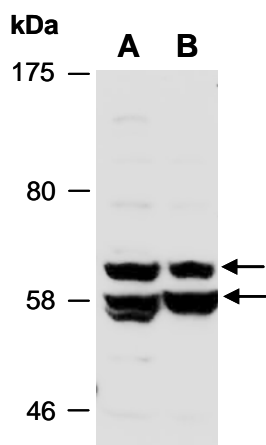


Fig 1. Western blot of total cell extracts from (A) human HeLa, (B) human Jurkat, using anti-ALDH2 (C2) (R2239-2) at RT for 2 h.