



Order: (888)-282-5810 (Phone)  
(818)-707-0392 (Fax)  
[order@abiocode.com](mailto:order@abiocode.com)  
Web: [www.Abiocode.com](http://www.Abiocode.com)

---

## **SMC6 (C) Antibody, Rabbit Polyclonal**

**Cat#: R1498-2**

**Quantity: 100 ul**

**Predicted | Observed M.W.: 126 kDa**

**Lot#: Refer to vial**

**Application: WB**

**Uniprot ID: Q96SB8**

### **Background:**

Structural maintenance of chromosomes protein 6 (SMC6) is a core component of the SMC5-SMC6 complex involved in DNA double-strand breaks by homologous recombination. The complex may promote sister chromatid homologous recombination by recruiting the SMC1-SMC3 cohesin complex to double-strand breaks. The complex is required for telomere maintenance via recombination in ALT (alternative lengthening of telomeres) cell lines and mediates sumoylation of shelterin complex (telosome) components, which is proposed to lead to shelterin complex disassembly in ALT-associated PML bodies (APBs). SMC6 is required for recruitment of telomeres to PML nuclear bodies.

### **Other Names:**

Structural maintenance of chromosomes protein 6, SMC protein 6, SMC-6, hSMC6, SMC6L1

### **Source and Purity:**

Rabbit polyclonal antibodies were produced by immunizing animals with a GST-fusion protein containing C-terminal region of human SMC6. Antibodies were purified by affinity purification using immunogen.

### **Storage Buffer and Condition:**

Supplied in 1 x PBS (pH 7.4), 100 ug/ml BSA, 40% Glycerol, 0.01% NaN<sub>3</sub>. Store at -20 °C. Stable for 6 months from date of receipt.

### **Species Specificity:**

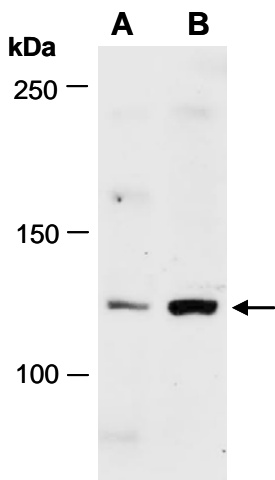
Human

### **Tested Applications:**

WB: 1:1,000-1:3,000 (detect endogenous protein\*)

\*: The apparent protein size on WB may be different from the calculated M.W. due to modifications.

**Product Data:**



**Fig 1.** Western blot of total cell extracts from (A) human HeLa, (B) human Jurkat; using anti-SMC6 (C) (R1498-2) at RT for 2 h.