



Order: (888)-282-5810 (Phone)  
(818)-707-0392 (Fax)  
[order@abiocode.com](mailto:order@abiocode.com)  
Web: [www.Abiocode.com](http://www.Abiocode.com)

---

## LRP5 (C1) Antibody, Rabbit Polyclonal

**Cat#:** R0820-1

**Quantity:** 100 ul

**Predicted | Observed M.W.:** 179 kDa

**Lot#:** Refer to vial

**Application:** WB

**Uniprot ID:** O75197

### **Background:**

LRP5 is the component of the Wnt-Fzd-LRP5-LRP6 complex that triggers beta-catenin signaling through inducing aggregation of receptor-ligand complexes into ribosome-sized signalsomes. LRP5 is cell-surface coreceptor of Wnt/beta-catenin signaling, which plays a pivotal role in bone formation. The Wnt-induced Fzd/LRP6 coreceptor complex recruits DVL1 polymers to the plasma membrane which, in turn, recruits the AXIN1/GSK3B-complex to the cell surface promoting the formation of signalsomes and inhibiting AXIN1/GSK3-mediated phosphorylation and destruction of beta-catenin. LRP5 appears to be required for postnatal control of vascular regression in the eye. LRP5 is required for posterior patterning of the epiblast during gastrulation.

### **Other Names:**

Low-density lipoprotein receptor-related protein 5, LRP-5, LR3, LRP7, BMND1, EVR1, HBM, OPPG, OPS

### **Source and Purity:**

Rabbit polyclonal antibodies were produced by immunizing animals with a GST-fusion protein containing the C-terminal region of human LRP5. Antibodies were purified by affinity purification using immunogen.

### **Storage Buffer and Condition:**

Supplied in 1 x PBS (pH 7.4), 100 ug/ml BSA, 40% Glycerol, 0.01% NaN<sub>3</sub>. Store at -20 °C. Stable for 6 months from date of receipt.

### **Species Specificity:**

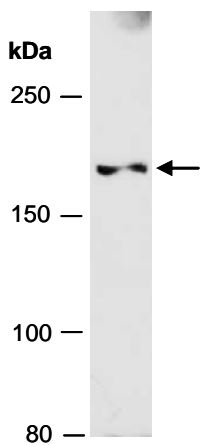
Human

### **Tested Applications:**

WB: 1:1,000-1:3,000 (detect endogenous protein\*)

\*: The apparent protein size on WB may be different from the calculated M.W. due to modifications.

**Product Data:**



**Fig 1.** Western blot of total cell extracts from human Jurkat; using anti-LRP5 (C1) (R0820-1) at RT for 2 h.