



Order: (888)-282-5810 (Phone)  
(818)-707-0392 (Fax)  
[order@abiocode.com](mailto:order@abiocode.com)  
Web: [www.Abiocode.com](http://www.Abiocode.com)

---

## **ROBO2 (N) Antibody, Rabbit Polyclonal**

**Cat#: R1055-1**

**Quantity: 100 ul**

**Predicted | Observed M.W.: 151 | 180 kDa**

**Lot#: Refer to vial**

**Application: WB**

**Uniprot ID: Q9HCK4**

### **Background:**

ROBO2 is a receptor for SLIT2, and probably SLIT1, which are thought to act as molecular guidance cue in cellular migration, including axonal navigation at the ventral midline of the neural tube and projection of axons to different regions during neuronal development. Defects in ROBO2 are the cause of vesicoureteral reflux type 2.

### **Other Names:**

Roundabout homolog 2, KIAA1568

### **Source and Purity:**

Rabbit polyclonal antibodies were produced by immunizing animals with a GST-fusion protein containing the N-terminal region of human ROBO2. Antibodies were purified by affinity purification using immunogen.

### **Storage Buffer and Condition:**

Supplied in 1 x PBS (pH 7.4), 100 ug/ml BSA, 40% Glycerol, 0.01% NaN<sub>3</sub>. Store at -20 °C. Stable for 6 months from date of receipt.

### **Species Specificity:**

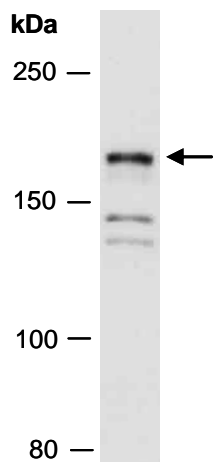
Human

### **Tested Applications:**

WB: 1:1,000-1:3,000 (detect endogenous protein\*)

\*: The apparent protein size on WB may be different from the calculated M.W. due to modifications.

**Product Data:**



**Fig 1.** Western blot of total cell extracts from human HeLa; using anti-ROBO2 (N) (R1055-1) at RT for 2 h.