



Order: (888)-282-5810 (Phone)  
(818)-707-0392 (Fax)  
[order@abiocode.com](mailto:order@abiocode.com)  
Web: [www.Abiocode.com](http://www.Abiocode.com)

---

## MAPK8IP1 (N2) Antibody, Rabbit Polyclonal

**Cat#:** R1424-2

**Quantity:** 100 ul

**Predicted | Observed M.W.:** 78 | 120 kDa

**Lot#:** Refer to vial

**Application:** WB

**Uniprot ID:** Q9UQF2

### **Background:**

Mitogen-activated protein kinase 8-interacting protein 1 (MAPK8IP1) is also known as C-Jun-amino-terminal kinase-interacting protein 1 (JIP1). The JIP family of scaffold proteins selectively mediates JNK signaling by aggregating specific components of the MAPK cascade to form a functional JNK signaling module. MAPK8IP1 is required for JNK activation in response to excitotoxic stress. Cytoplasmic MAPK8IP1 causes inhibition of JNK-regulated activity by retaining JNK in the cytoplasm and inhibiting JNK phosphorylation of c-Jun. MAPK8IP1 may also participate in ApoER2-specific reelin signaling. MAPK8IP1 is highly expressed in brain and appears to have a role in cell signaling in mature and developing nerve terminals. It may also function as a regulator of vesicle transport, through interactions with the JNK-signaling components and motor proteins. MAPK8IP1 is also expressed in the pancreas, testis and prostate. It regulates GLUT2 gene expression and functions as an anti-apoptotic protein and whose level seems to influence the beta-cell death or survival response. Defects in MAPK8IP1 are a cause of non-insulin-dependent diabetes mellitus (NIDDM).

### **Other Names:**

C-Jun-amino-terminal kinase-interacting protein 1, JIP-1, JNK-interacting protein 1, Islet-brain 1, IB-1, JNK MAP kinase scaffold protein 1, Mitogen-activated protein kinase 8-interacting protein 1, IB1, JIP1, PRKM8IP

### **Source and Purity:**

Rabbit polyclonal antibodies were produced by immunizing animals with a GST-fusion protein containing N-terminal region of human MAPK8IP1. Antibodies were purified by affinity purification using immunogen.

### **Storage Buffer and Condition:**

Supplied in 1 x PBS (pH 7.4), 100 ug/ml BSA, 40% Glycerol, 0.01% NaN<sub>3</sub>. Store at -20 °C. Stable for 6 months from date of receipt.

### **Tested Applications:**

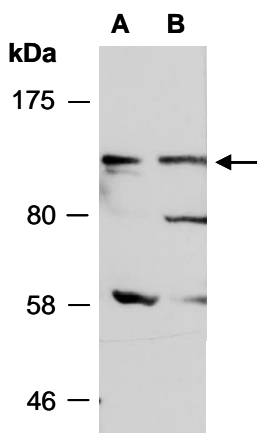
WB: 1:1,000-1:3,000 (detect endogenous protein\*)

\*: The apparent protein size on WB may be different from the calculated M.W. due to modifications.

**Species Specificity:**

Human

**Product Data:**



**Fig 1.** Western blot of total cell extracts from (A) human HeLa, (B) human Jurkat; using anti-MAPK8IP1 (N2) (R1424-2) at RT for 2 h.