



Order: (888)-282-5810 (Phone)  
(818)-707-0392 (Fax)  
[order@abiocode.com](mailto:order@abiocode.com)  
Web: [www.Abiocode.com](http://www.Abiocode.com)

---

## NOTCH1 (C) Antibody, Rabbit Polyclonal

**Cat#:** R0744-3

**Quantity:** 100 ul

**Predicted | Observed M.W.:** 273 | 110 kDa

**Lot#:** Refer to vial

**Application:** WB

**Uniprot ID:** P46531

### **Background:**

Neurogenic locus notch homolog protein 1 (NOTCH1) belongs to the Notch family. It is a single-pass type I membrane protein. The Notch signaling pathway is important for differentiation of cell types in humans. NOTCH1 is a heterodimer that interacts with various proteins and forms a trimeric complex with FBXW7 and SGK1. Coexpression of NOTCH1 and JAG1 has been observed in human breast cancer and is associated with poor survival. NOTCH1 is also associated with T-cell lymphoma and T-cell lymphoblastic leukemia. Defects in NOTCH1 are associated with aortic valve disease 1 (AOVD1).

### **Other Names:**

Neurogenic locus notch homolog protein 1, Notch 1, hN1, Translocation-associated notch protein TAN-1, NICD, TAN1

### **Source and Purity:**

Rabbit polyclonal antibodies were produced by immunizing animals with a GST-fusion protein containing the C-terminal region of human NOTCH1. Antibodies were purified by affinity purification using immunogen.

### **Storage Buffer and Condition:**

Supplied in 1 x PBS (pH 7.4), 100 ug/ml BSA, 40% Glycerol, 0.01% NaN<sub>3</sub>. Store at -20 °C. Stable for 6 months from date of receipt.

### **Species Specificity:**

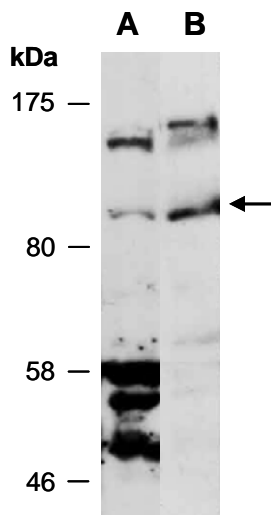
Human, Mouse

### **Tested Applications:**

WB: 1:1,000-1:3,000 (detect endogenous protein\*)

\*: The apparent protein size on WB may be different from the calculated M.W. due to modifications.

**Product Data:**



**Fig 1.** Western blot of total cell extracts from (A) mouse thymus, (B) human Jurkat, using anti-NOTCH1 (C) (R0774-3) at RT for 2 h. This Ab recognizes the cleaved NOTCH1 (NICD) with a M.W. of approximately 110 kD.