



Order: (888)-282-5810 (Phone)  
(818)-707-0392 (Fax)  
[order@abiocode.com](mailto:order@abiocode.com)  
Web: [www.Abiocode.com](http://www.Abiocode.com)

---

## **APAF1 (N) Antibody, Rabbit Polyclonal**

**Cat#: R1323-1**

**Quantity: 100 ul**

**Predicted | Observed M.W.: 142 kDa**

**Lot#: Refer to vial**

**Application: WB**

**Uniprot ID: O14727**

### **Background:**

Apoptotic protease-activating factor 1 (APAF1) mediates the cytochrome c-dependent autocatalytic activation of pro-caspase-9 (Apaf-3), leading to the activation of caspase-3 and apoptosis. This activation requires ATP. When APAF1 binds to cytochrome c and dATP, it oligomerizes to a heptameric ring, the apoptosome. Oligomeric APAF1 binds to pro-caspase 9 via their NH<sub>2</sub>-terminal CARD domains and releases mature caspase 9. The complex recruits pro-caspase 3.

### **Other Names:**

Apoptotic protease-activating factor 1, APAF-1, KIAA0413

### **Source and Purity:**

Rabbit polyclonal antibodies were produced by immunizing animals with a GST-fusion protein containing the N-terminal region of human APAF1. Antibodies were purified by affinity purification using immunogen.

### **Storage Buffer and Condition:**

Supplied in 1 x PBS (pH 7.4), 100 ug/ml BSA, 40% Glycerol, 0.01% NaN<sub>3</sub>. Store at -20 °C. Stable for 6 months from date of receipt.

### **Species Specificity:**

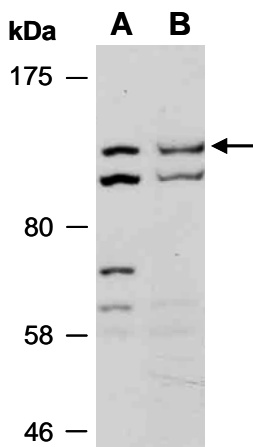
Human

### **Tested Applications:**

WB: 1:1,000-1:3,000 (detect endogenous protein\*)

\*: The apparent protein size on WB may be different from the calculated M.W. due to modifications.

**Product Data:**



**Fig 1.** Western blot of total cell extracts from (A) human HeLa, (B) human Jurkat, using anti-APAF1 (N) (R1323-1) at RT for 2 h.