



Order: (888)-282-5810 (Phone)
(818)-707-0392 (Fax)
order@abiocode.com
Web: www.Abiocode.com

PLD2 (N) Antibody, Rabbit Polyclonal

Cat#: R1858-1

Quantity: 100 ul

Predicted | Observed M.W.: 106 kDa

Lot#: Refer to vial

Application: WB

Uniprot ID: O14939

Background:

Phospholipase D2 (PLD2) is a peripheral membrane protein that belongs to the phospholipase D family. PLD2 contains a PH domain, two PLD phosphodiesterase domains and a PX (phox homology) domain. PLD2 may have a role in signal-induced cytoskeletal regulation and/or endocytosis.

Other Names:

Phospholipase D2, PLD 2, hPLD2, Choline phosphatase 2, PLD1C, Phosphatidylcholine-hydrolyzing phospholipase D2

Source and Purity:

Rabbit polyclonal antibodies were produced by immunizing animals with a GST-fusion protein containing N-terminal region of human PLD2. Antibodies were purified by affinity purification using immunogen.

Storage Buffer and Condition:

Supplied in 1 x PBS (pH 7.4), 100 ug/ml BSA, 40% Glycerol, 0.01% NaN₃. Store at -20 °C. Stable for 6 months from date of receipt.

Tested Applications:

WB: 1:1,000-1:3,000 (detect endogenous protein*)

*: The apparent protein size on WB may be different from the calculated M.W. due to modifications.

Species Specificity:

Human, Mouse

Product Data:

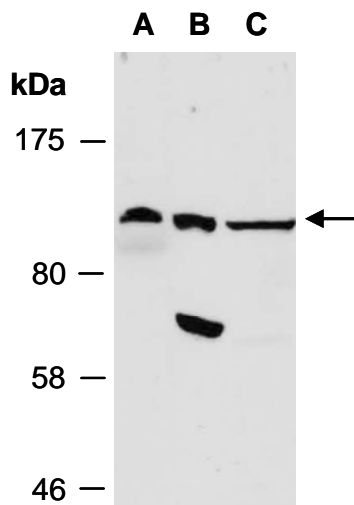


Fig 1. Western blot of total cell extracts from (A) mouse thymus, (B) human HeLa, (C) human Jurkat; using anti-PLD2 (N) (R1858-1) at RT for 2 h.