



Order: (888)-282-5810 (Phone)
(818)-707-0392 (Fax)
order@abiocode.com
Web: www.Abiocode.com

FAF2 (C) Antibody, Rabbit Polyclonal

Cat#: R1918-2

Quantity: 100 ul

Predicted | Observed MW: 53 | 65 kDa

Lot#: Refer to vial

Application: WB

Uniprot ID: Q96CS3

Background:

FAS-associated factor 2 (FAF2) may play a role in the translocation of terminally misfolded proteins from the endoplasmic reticulum lumen to the cytoplasm and their degradation by the proteasome. FAF2 is broadly expressed with highest levels in brain. FAF2 is highly expressed in peripheral blood of patients with atopic dermatitis (AD) compared to normal individuals. It may play a role in regulating the resistance to apoptosis that is observed in T cells and eosinophils of AD patients.

Other Names:

FAS-associated factor 2, Protein ETEA, UBX domain-containing protein 3B, UBX domain-containing protein 8, ETEA, KIAA0887, UBXD8, UBXN3B

Source and Purity:

Rabbit polyclonal antibodies were produced by immunizing animals with a GST-fusion protein containing the C-terminal region of human FAF2. Antibodies were purified by affinity purification using immunogen.

Storage Buffer and Condition:

Supplied in 1 x PBS (pH 7.4), 100 ug/ml BSA, 40% Glycerol, 0.01% NaN₃. Store at -20 °C. Stable for 6 months from date of receipt.

Tested Applications:

WB: 1:1,000-1:3,000 (detect endogenous protein*)

*: The apparent protein size on WB may be different from the calculated M.W. due to modifications.

Species Specificity:

Human, Mouse

Product Data:

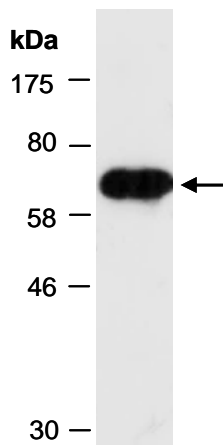


Fig 1. Western blot of total cell extracts from mouse brain; using anti-FAF2 (C) (R1918-2) at RT for 2 h.