



Order: (888)-282-5810 (Phone)  
(818)-707-0392 (Fax)  
[order@abiocode.com](mailto:order@abiocode.com)  
Web: [www.Abiocode.com](http://www.Abiocode.com)

---

## **ELK1 (N) Antibody, Rabbit Polyclonal**

**Cat#: R1330-1**

**Quantity: 100 ul**

**Predicted | Observed M.W.: 45 | 58 kDa**

**Lot#: Refer to vial**

**Application: WB**

**Uniprot ID: P19419**

### **Background:**

ETS domain-containing protein Elk-1 (ELK1) belongs to the ETS family. It is expressed in the lung and testis. ELK1 stimulates transcription, binding to purine-rich DNA sequences. It can form a ternary complex with the serum response factor and the ETS and SRF motifs of the fos serum response element. In its sumoylated form it interacts with PIAS2/PIASX to enhance its transcriptional activator activity. ELK1 interacts with MAD2L2 directly and promotes phosphorylation by kinases MAPK8 and/or MAPK9.

### **Other Names:**

ETS domain-containing protein Elk-1

### **Source and Purity:**

Rabbit polyclonal antibodies were produced by immunizing animals with a GST-fusion protein containing the N-terminal region of human ELK1. Antibodies were purified by affinity purification using immunogen.

### **Storage Buffer and Condition:**

Supplied in 1 x PBS (pH 7.4), 100 ug/ml BSA, 40% Glycerol, 0.01% NaN<sub>3</sub>. Store at -20 °C. Stable for 6 months from date of receipt.

### **Species Specificity:**

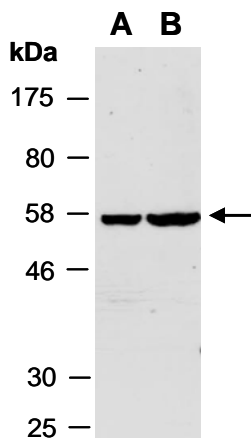
Human

### **Tested Applications:**

WB: 1:1,000-1:3,000 (detect endogenous protein\*)

\*: The apparent protein size on WB may be different from the calculated M.W. due to modifications.

**Product Data:**



**Fig 1.** Western blot of total cell extracts from (A) human HeLa, (B) human Jurkat; using anti-ELK1 (N) (R1330-1) at RT for 2 h.