



Order: (888)-282-5810 (Phone)
(818)-707-0392 (Fax)
order@abiocode.com
Web: www.Abiocode.com

SYN1 (C2) Antibody, Rabbit Polyclonal

Cat#: R2034-3

Quantity: 100 ul

Predicted | Observed M.W.: 74 kDa

Lot#: Refer to vial

Application: WB

Uniprot ID: O88935

Background:

SYN1 plays a role in regulation of axonogenesis and synaptogenesis. SYN1 serves as a substrate for several different protein kinases and phosphorylation may function in the regulation of this protein in the nerve terminal. Defects in SYN1 may be associated with X-linked disorders with primary neuronal degeneration such as Rett syndrome.

Other Names:

Synapsin-1, Synapsin I, Syn-1

Source and Purity:

Rabbit polyclonal antibodies were produced by immunizing animals with a GST-fusion protein containing C-terminal region of mouse SYN1. Antibodies were purified by affinity purification using immunogen.

Storage Buffer and Condition:

Supplied in 1 x PBS (pH 7.4), 100 ug/ml BSA, 40% Glycerol, 0.01% NaN₃. Store at -20 °C. Stable for 6 months from date of receipt.

Species Specificity:

Mouse

Tested Applications:

WB: 1:1,000-1:3,000 (detect endogenous protein*)

*: The apparent protein size on WB may be different from the calculated M.W. due to modifications.

Product Data:

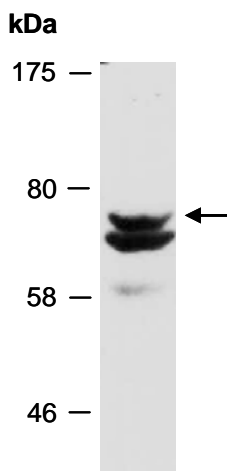


Fig 1. Western blot of total cell extracts from mouse brain; using anti-SYN1 (C2) (R2034-3) at RT for 2 h.