



Order: (888)-282-5810 (Phone)
(818)-707-0392 (Fax)
order@abiocode.com
Web: www.Abiocode.com

MSX2 (M) Antibody, Rabbit Polyclonal

Cat#: R2131-2

Quantity: 100 ul

Predicted | Observed M.W.: 29 | 32 kDa

Lot#: Refer to vial

Application: WB

Uniprot ID: P35548

Background:

Homeobox protein MSX2 is a nuclear protein that belongs to the Msh homeobox family and contains 1 homeobox DNA-binding domain. MSX2 acts as a transcriptional regulator in bone development. It represses the ALPL promoter activity and antagonizes the stimulatory effect of DLX5 on ALPL expression during osteoblast differentiation. MSX2 may also play a role in limb-pattern formation. In osteoblasts, MSX2 suppresses transcription driven by the osteocalcin FGF response element (OCFRE). Defects in MSX2 are the cause of parietal foramina 1 (PFM1), parietal foramina with cleidocranial dysplasia (PFMCCD), craniosynostosis type 2 (CRS2).

Other Names:

Homeobox protein MSX-2, Homeobox protein Hox-8, HOX8

Source and Purity:

Rabbit polyclonal antibodies were produced by immunizing animals with a GST-fusion protein containing middle region of human MSX2. Antibodies were purified by affinity purification using immunogen.

Storage Buffer and Condition:

Supplied in 1 x PBS (pH 7.4), 100 ug/ml BSA, 40% Glycerol, 0.01% NaN₃. Store at -20 °C. Stable for 6 months from date of receipt.

Species Specificity:

Human

Tested Applications:

WB: 1:1,000-1:3,000 (detect endogenous protein*)

*: The apparent protein size on WB may be different from the calculated M.W. due to modifications.

Product Data:

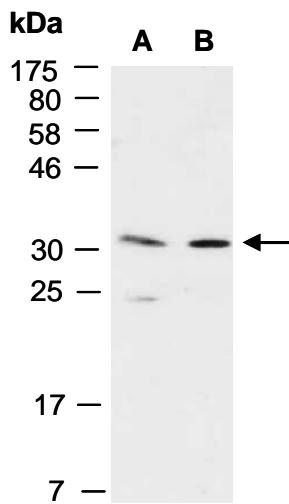


Fig 1. Western blot of total cell extracts from (A) human HeLa, (B) human Jurkat; using anti-MSX2 (M) (R2131-2) at RT for 2 h.