



Order: (888)-282-5810 (Phone)  
(818)-707-0392 (Fax)  
[order@abiocode.com](mailto:order@abiocode.com)  
Web: [www.Abiocode.com](http://www.Abiocode.com)

---

## LRP8 (C2) Antibody, Rabbit Polyclonal

**Cat#:** R2159-2

**Quantity:** 100 ul

**Predicted | Observed M.W.:** 106 kDa

**Lot#:** Refer to vial

**Application:** WB

**Uniprot ID:** Q14114

### Background:

LRP8 is cell surface protein that plays roles in both signal transduction and receptor-mediated endocytosis of specific ligands for lysosomal degradation. LRP8 plays a critical role in the migration of neurons during development by mediating Reelin signaling, and also functions as a receptor for the cholesterol transport protein apolipoprotein E. Expression of LRP8 may be a marker for major depressive disorder. Defects in LRP8 are a cause of myocardial infarction type 1.

### Other Names:

Low-density lipoprotein receptor-related protein 8, LRP-8, Apolipoprotein E receptor 2, APOER2

### Source and Purity:

Rabbit polyclonal antibodies were produced by immunizing animals with a GST-fusion protein containing C-terminal region of human LRP8. Antibodies were purified by affinity purification using immunogen.

### Storage Buffer and Condition:

Supplied in 1 x PBS (pH 7.4), 100 ug/ml BSA, 40% Glycerol, 0.01% NaN<sub>3</sub>. Store at -20 °C. Stable for 6 months from date of receipt.

### Species Specificity:

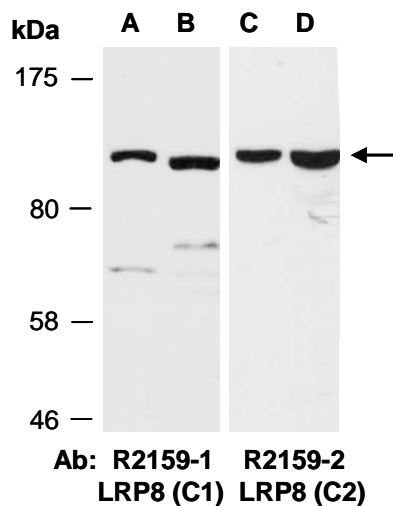
Human

### Tested Applications:

WB: 1:1,000-1:3,000 (detect endogenous protein\*)

\*: The apparent protein size on WB may be different from the calculated M.W. due to modifications.

**Product Data:**



**Fig 1.** Western blot of total cell extracts from (A, C) human HeLa, (B, D) human Jurkat; using 2 independent Abs against 2 distinct regions of LRP8 at RT for 2 h.