



Order: (888)-282-5810 (Phone)
(818)-707-0392 (Fax)
order@abiocode.com
Web: www.Abiocode.com

LRP8 (vPair™) Antibodies

Cat#: R2159-vp

Lot#: Refer to vial

Predicted | Observed M.W.: 106 kDa

Uniprot ID: Q14114

Application: WB

Quantity: 50 ul LRP8 (C1) (R2159-1) Rabbit Polyclonal Antibody &

50 ul LRP8 (C2) (R2159-2) Rabbit Polyclonal Antibody

Product Introduction:

vPair™ antibodies represent a pair of fully characterized antibodies that recognize two different regions of a target protein. The product is developed by Abiocode to address whether the signal observed truly represents the protein of interest, an often encountered issue in antibody-based assays. The use of a pair of fully characterized vPair™ antibodies in the same assay can validate signal specificity since vPair™ antibodies recognize two independent epitopes of the same protein. Different sets of vPair™ antibodies are developed at Abiocode to work with specific applications, including antibody arrays, Western blot, IP-Western, ChIP, IHC, and FACS.

Background:

LRP8 is cell surface protein that plays roles in both signal transduction and receptor-mediated endocytosis of specific ligands for lysosomal degradation. LRP8 plays a critical role in the migration of neurons during development by mediating Reelin signaling, and also functions as a receptor for the cholesterol transport protein apolipoprotein E. Expression of LRP8 may be a marker for major depressive disorder. Defects in LRP8 are a cause of myocardial infarction type 1.

Other Names:

Low-density lipoprotein receptor-related protein 8, LRP-8, Apolipoprotein E receptor 2, APOER2

Source and Purity:

Rabbit polyclonal antibodies were produced by immunizing animals with GST-fusion proteins containing 2 distinct C-terminal regions of human LRP8. Antibodies were purified by affinity purification using immunogen.

Storage Buffer and Condition:

Supplied in 1 x PBS (pH 7.4), 100 ug/ml BSA, 40% Glycerol, 0.01% NaN₃. Store at -20 °C. Stable for 6 months from date of receipt.

For research use only. Not for therapeutic or diagnostic purposes.
Abiocode, Inc., 29397 Agoura Rd., Ste 106, Agoura Hills, CA 91301

Species Specificity:

Human

Tested Applications:

WB: 1:1,000-1:3,000 (detect endogenous protein*)

*: The apparent protein size on WB may be different from the calculated M.W. due to modifications.

Product Data:

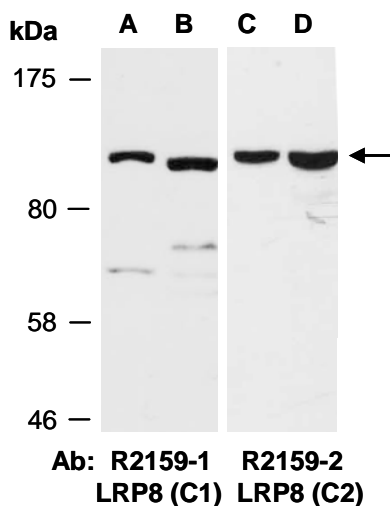


Fig 1. Western blot of total cell extracts from (A, C) human HeLa, (B, D) human Jurkat; using 2 independent Abs against 2 distinct regions of LRP8 at RT for 2 h.