



Order: (888)-282-5810 (Phone)
(818)-707-0392 (Fax)
order@abiocode.com
Web: www.Abiocode.com

SYPL1 (N2) Antibody, Rabbit Polyclonal

Cat#: R2233-3

Quantity: 100 ul

Predicted | Observed M.W.: 29 kDa

Lot#: Refer to vial

Application: WB

Uniprot ID: Q16563

Background:

Synaptophysin-like protein 1 (SYPL1) is also known as pantophysin, which is a multi-pass membrane protein located at cytoplasmic transport vesicle membrane. SYPL1 belongs to the synaptophysin/synaptobrevin family and contains 1 MARVEL domain. SYPL1 is one of the major synaptic vesicle membrane proteins related to the neuroendocrine-specific synaptophysin. SYPL1 has also been identified in non-neuronal tissues. Its presence on GLUT4 vesicles is consistent with the emerging role of soluble N-ethylmaleimide-sensitive protein receptor (SNARE) factor complex and related proteins in regulated vesicle transport in adipocytes.

Other Names:

Synaptophysin-like protein 1, SYPL, Pantophysin

Source and Purity:

Rabbit polyclonal antibodies were produced by immunizing animals with a GST-fusion protein containing N-terminal region of mouse SYPL1. Antibodies were purified by affinity purification using immunogen.

Storage Buffer and Condition:

Supplied in 1 x PBS (pH 7.4), 100 ug/ml BSA, 40% Glycerol, 0.01% NaN₃. Store at -20 °C. Stable for 6 months from date of receipt.

Species Specificity:

Mouse

Tested Applications:

WB: 1:1,000-1:3,000 (detect endogenous protein*)

*: The apparent protein size on WB may be different from the calculated M.W. due to modifications.

Product Data:

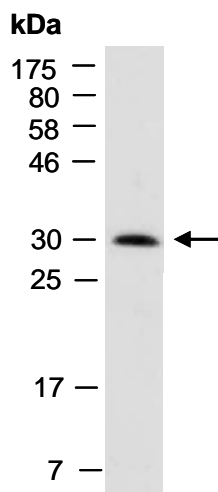


Fig 1. Western blot of total cell extracts from mouse brain; using anti-SYPL1 (N2) (R2233-3) at RT for 2 h.