



Order: (888)-282-5810 (Phone)
(818)-707-0392 (Fax)
order@abiocode.com
Web: www.Abiocode.com

SNAI2 (C) Antibody, Rabbit Polyclonal

Cat#: R2344-2

Quantity: 100 ul

Predicted | Observed M.W.: 30 kDa

Lot#: Refer to vial

Application: WB

Uniprot ID: O43623

Background:

Protein snail homolog 2 (SNAI2) is also known as SLUG, which is a nuclear protein belonging to the snail C2H2-type zinc-finger protein family. SNAI2 is a transcriptional repressor involved in the generation and migration of neural crest cells. SNAI2 plays a role in mediating RAF1-induced transcriptional repression of the TJ protein, occludin (OCLN) and subsequent oncogenic transformation of epithelial cells. Defects in SNAI2 are the cause of Waardenburg syndrome type 2D (WS2D).

Other Names:

Zinc finger protein SNAI2, Neural crest transcription factor Slug, Protein snail homolog 2, SLUG, SLUGH

Source and Purity:

Rabbit polyclonal antibodies were produced by immunizing animals with a GST-fusion protein containing C-terminal region of human SNAI2. Antibodies were purified by affinity purification using immunogen.

Storage Buffer and Condition:

Supplied in 1 x PBS (pH 7.4), 100 ug/ml BSA, 40% Glycerol, 0.01% NaN₃. Store at -20 °C. Stable for 6 months from date of receipt.

Species Specificity:

Human, Mouse

Tested Applications:

WB: 1:1,000-1:3,000 (detect endogenous protein*)

*: The apparent protein size on WB may be different from the calculated M.W. due to modifications.

Product Data:

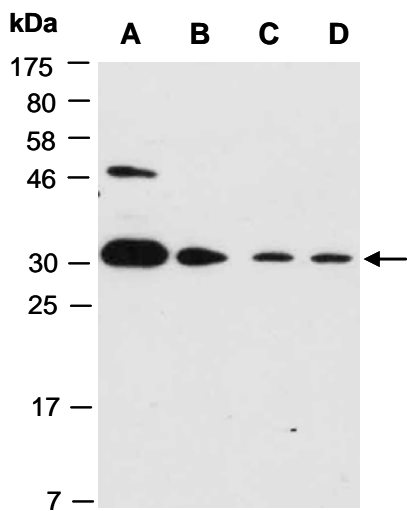


Fig 1. Western blot of total cell extracts from (A) mouse brain, (B) mouse thymus, (C) human HeLa, (D) human Jurkat; using anti-SNAI2 (C) (R2344-2) at RT for 2 h.