



Order: (888)-282-5810 (Phone)  
(818)-707-0392 (Fax)  
[order@abiocode.com](mailto:order@abiocode.com)  
Web: [www.Abiocode.com](http://www.Abiocode.com)

---

## **PTF1A (N) Antibody, Rabbit Polyclonal**

**Cat#: R2367-1**

**Quantity: 100 ul**

**Predicted | Observed M.W.: 35 kDa**

**Lot#: Refer to vial**

**Application: WB**

**Uniprot ID: Q7RTS3**

### **Background:**

PTF1A is transcriptional activator. PTF1A binds to the E-box consensus sequence 5'-CANNTG-3'. PTF1A plays an important role in determining whether cells allocated to the pancreatic buds continue towards pancreatic organogenesis or revert back to duodenal fates. PTF1A may be involved in the maintenance of exocrine pancreas-specific gene expression including ELA1 and amylase. PTF1A is required for the formation of pancreatic acinar and ductal cells. PTF1A plays an important role in cerebellar development. Defects in PTF1A are the cause of pancreatic and cerebellar agenesis.

### **Other Names:**

Pancreas transcription factor 1 subunit alpha, Class A basic helix-loop-helix protein 29, bHLHa29, Pancreas-specific transcription factor 1a, bHLH transcription factor p48, p48 DNA-binding subunit of transcription factor PTF1, BHLHA29, PTF1P48

### **Source and Purity:**

Rabbit polyclonal antibodies were produced by immunizing animals with a GST-fusion protein containing N-terminal region of human PTF1A. Antibodies were purified by affinity purification using immunogen.

### **Storage Buffer and Condition:**

Supplied in 1 x PBS (pH 7.4), 100 ug/ml BSA, 40% Glycerol, 0.01% NaN<sub>3</sub>. Store at -20 °C. Stable for 6 months from date of receipt.

### **Species Specificity:**

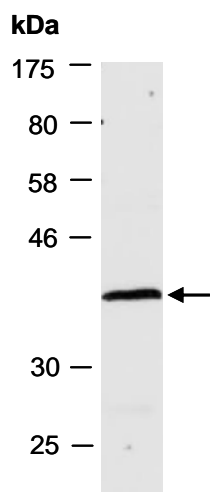
Human, Mouse

### **Tested Applications:**

WB: 1:1,000-1:3,000 (detect endogenous protein\*)

\*: The apparent protein size on WB may be different from the calculated M.W. due to modifications.

**Product Data:**



**Fig 1.** Western blot of total cell extracts from mouse brain; using anti-PTF1A (N) (R2367-1) at RT for 2 h.