



Order: (888)-282-5810 (Phone)
(818)-707-0392 (Fax)
order@abiocode.com
Web: www.Abiocode.com

DOT1L (C) Antibody, Rabbit Polyclonal

Cat#: R2376-2

Quantity: 100 ul

Predicted | Observed M.W.: 185 | 220 kDa

Lot#: Refer to vial

Application: WB

Uniprot ID: Q8TEK3

Background:

DOT1-like protein (DOT1L) is also known as Histone-lysine N-methyltransferase, H3 lysine-79 specific (H3-K79-HMTase) that belongs to the class I-like SAM-binding methyltransferase superfamily. DOT1L is a histone methyltransferase that binds to DNA and specifically methylates 'Lys-79' of histone H3. Nucleosomes are preferred as substrate for DOT1L as compared to free histones.

Other Names:

Histone-lysine N-methyltransferase, H3 lysine-79 specific; DOT1-like protein, Histone H3-K79 methyltransferase, H3-K79-HMTase, Lysine N-methyltransferase 4, KIAA1814, KMT4

Source and Purity:

Rabbit polyclonal antibodies were produced by immunizing animals with a GST-fusion protein containing C-terminal region of human DOT1L. Antibodies were purified by affinity purification using immunogen.

Storage Buffer and Condition:

Supplied in 1 x PBS (pH 7.4), 100 ug/ml BSA, 40% Glycerol, 0.01% NaN₃. Store at -20 °C. Stable for 6 months from date of receipt.

Species Specificity:

Human, Mouse

Tested Applications:

WB: 1:1,000-1:3,000 (detect endogenous protein*)

*: The apparent protein size on WB may be different from the calculated M.W. due to modifications.

Product Data:

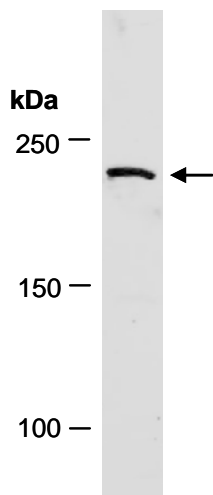


Fig 1. Western blot of total cell extracts from mouse thymus; using anti-DOT1L (C) (R2376-2) at RT for 2 h.