



Order: (888)-282-5810 (Phone)
(818)-707-0392 (Fax)
order@abiocode.com
Web: www.Abiocode.com

YAF2 (M) Antibody, Rabbit Polyclonal

Cat#: R2677-1

Quantity: 100 ul

Predicted | Observed M.W.: 20 kDa

Lot#: Refer to vial

Application: WB

Uniprot ID: Q8IY57

Background:

YY1-associated factor 2 (YAF2) is a nuclear protein that contains a RanBP2-type zinc finger. YAF2 binds to MYC and inhibits MYC-mediated transactivation. YAF2 also binds to MYCN and enhances MYCN-dependent transcriptional activation. YAF2 interacts with YY1 and increases calpain 2-mediated proteolysis of YY1 *in vitro*. YAF2 is also a component of the E2F6.com-1 complex, a repressive complex that methylates 'Lys-9' of histone H3, suggesting that it is involved in chromatin-remodeling.

Other Names:

YY1-associated factor 2

Source and Purity:

Rabbit polyclonal antibodies were produced by immunizing animals with a GST-fusion protein containing middle region of human YAF2. Antibodies were purified by affinity purification using immunogen.

Storage Buffer and Condition:

Supplied in 1 x PBS (pH 7.4), 100 ug/ml BSA, 40% Glycerol, 0.01% NaN₃. Store at -20 °C. Stable for 6 months from date of receipt.

Species Specificity:

Human

Tested Applications:

WB: 1:1,000-1:3,000 (detect endogenous protein*)

*: The apparent protein size on WB may be different from the calculated M.W. due to modifications.

Product Data:

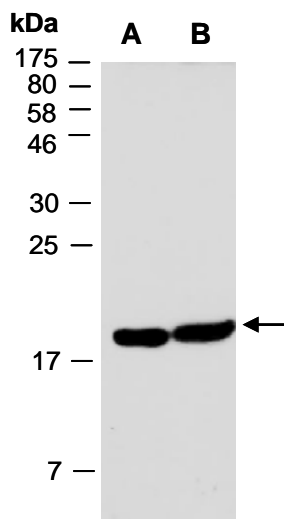


Fig 1. Western blot of total cell extracts from (A) human HeLa, (B) human Jurkat; using anti-YAF2 (M) (R2677-1) at RT for 2 h.