



Order: (888)-282-5810 (Phone)
(818)-707-0392 (Fax)
order@abiocode.com
Web: www.Abiocode.com

PER1 (N) Antibody, Rabbit Polyclonal

Cat#: R1473-1

Quantity: 100 ul

Predicted | Observed M.W.: 136 kDa

Lot#: Refer to vial

Application: WB

Uniprot ID: O15534

Background:

Period circadian protein homolog 1 (PER1) is a core clock factor that plays an essential role in generating circadian rhythms. PER1 influences clock function by interacting with other circadian regulatory proteins and transporting them to the nucleus. The circadian core oscillator includes the CRY proteins, CLOCK or NPAS2, BMAL1 or BMAL2, CSNK1D and/or CSNK1E, TIMELESS, and the PER proteins. PER1 binds to CSNK1G2 and triggers proteasomal degradation.

Other Names:

Period circadian protein homolog 1, hPER1, Circadian clock protein PERIOD 1, Circadian pacemaker protein Rigui, KIAA0482, PER, RIGUI

Source and Purity:

Rabbit polyclonal antibodies were produced by immunizing animals with a GST-fusion protein containing the N-terminal region of human PER1. Antibodies were purified by affinity purification using immunogen.

Storage Buffer and Condition:

Supplied in 1 x PBS (pH 7.4), 100 ug/ml BSA, 40% Glycerol, 0.01% NaN₃. Store at -20 °C. Stable for 6 months from date of receipt.

Species Specificity:

Human

Tested Applications:

WB: 1:1,000-1:3,000 (detect endogenous protein*)

*: The apparent protein size on WB may be different from the calculated M.W. due to modifications.

Product Data:

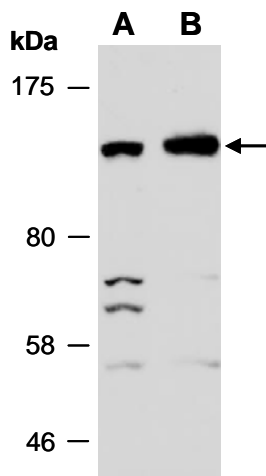


Fig 1. Western blot of total cell extracts from (A) human HeLa, (B) human Jurkat, using anti-PER1 (N) (R1473-1) at RT for 2 h.