



Order: (888)-282-5810 (Phone)
(818)-707-0392 (Fax)
order@abiocode.com
Web: www.Abiocode.com

ASCL2 (C) Antibody, Rabbit Polyclonal

Cat#: R1879-2

Quantity: 100 ul

Predicted | Observed M.W.: 20 | 46 kDa

Lot#: Refer to vial

Application: WB

Uniprot ID: Q99929

Background:

Achaete-scute homolog 2 (ASCL2) contains 1 basic helix-loop-helix domain (bHLH). AS-C proteins are involved in the determination of the neuronal precursors in the peripheral nervous system and the central nervous system. ASCL2 is found in the nucleus and is expressed specifically in the extravillous trophoblasts of the developing placenta. It can bind to DNA after dimerization with another bHLH protein.

Other Names:

Achaete-scute homolog 2, Class A basic helix-loop-helix protein 45, bHLHa45, Mash2, BHLHA45, HASH2, ASH-2, hASH2

Source and Purity:

Rabbit polyclonal antibodies were produced by immunizing animals with a GST-fusion protein containing the C-terminal region of human ASCL2. Antibodies were purified by affinity purification using immunogen.

Storage Buffer and Condition:

Supplied in 1 x PBS (pH 7.4), 100 ug/ml BSA, 40% Glycerol, 0.01% NaN₃. Store at -20 °C. Stable for 6 months from date of receipt.

Species Specificity:

Human, Mouse

Tested Applications:

WB: 1:1,000-1:3,000 (detect endogenous protein*)

*: The apparent protein size on WB may be different from the calculated M.W. due to modifications.

Product Data:

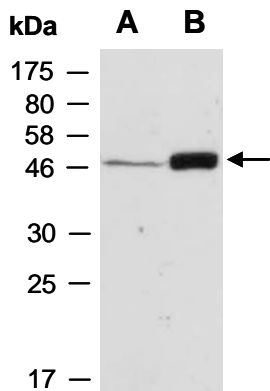


Fig 1. Western blot of total cell extracts from (A) mouse brain, (B) mouse thymus; using anti-ASCL2 (C) (R1879-2) at RT for 2 h.