



Order: (888)-282-5810 (Phone)  
(818)-707-0392 (Fax)  
[order@abiocode.com](mailto:order@abiocode.com)  
Web: [www.Abiocode.com](http://www.Abiocode.com)

---

## **NFATC1 (N) Antibody, Rabbit Polyclonal**

**Cat#: R2315-1**

**Quantity: 100 ul**

**Predicted | Observed MW: 101 kDa**

**Lot#: Refer to vial**

**Application: WB**

**Uniprot ID: O95644**

### **Background:**

Nuclear factor of activated T-cells, cytoplasmic 1 (NFATC1) is a component of the nuclear factor of activated T cells DNA-binding transcription complex. This complex consists of at least two components: a preexisting cytosolic component that translocates to the nucleus upon T cell receptor (TCR) stimulation, and an inducible nuclear component. Proteins belonging to this family of transcription factors play a central role in inducible gene transcription during immune response. NFATC1 is an inducible nuclear component. It functions as a major molecular target for the immunosuppressive drugs such as cyclosporin A. Five transcript variants encoding distinct isoforms have been identified for this gene. Different isoforms of this protein may regulate inducible expression of different cytokine genes [provided by RefSeq].

### **Other Names:**

Nuclear factor of activated T-cells, cytoplasmic 1; NF-ATc1, NFATc1, NFAT transcription complex cytosolic component, NF-ATc, NFATc, NFAT2, NFATC

### **Source and Purity:**

Rabbit polyclonal antibodies were produced by immunizing animals with a GST-fusion protein containing the N-terminal region of human NFATC1. Antibodies were purified by affinity purification using immunogen.

### **Storage Buffer and Condition:**

Supplied in 1 x PBS (pH 7.4), 100 ug/ml BSA, 40% Glycerol, 0.01% NaN<sub>3</sub>. Store at -20 °C. Stable for 6 months from date of receipt.

### **Species Specificity:**

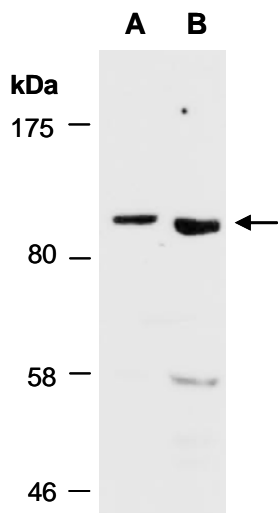
Human

### **Tested Applications:**

WB: 1:1,000-1:3,000 (detect endogenous protein\*)

\*: The apparent protein size on WB may be different from the calculated M.W. due to modifications.

**Product Data:**



**Fig 1.** Western blot of total cell extracts from (A) human HeLa, (B) human Jurkat; using anti-NFATC1 (N) (R2315-1) at RT for 2 h.