



Order: (888)-282-5810 (Phone)
(818)-707-0392 (Fax)
order@abiocode.com
Web: www.Abiocode.com

LIN52 (C) Antibody, Rabbit Polyclonal

Cat#: R1893-2

Quantity: 100 ul

Predicted | Observed M.W.: 13 | 28 kDa

Lot#: Refer to vial

Application: WB

Uniprot ID: Q52LA3

Background:

Protein lin-52 homolog (LIN52) belongs to the lin-52 family. LIN52 is a component of the DREAM complex (also named LINC complex) which includes E2F4, E2F5, LIN9, LIN37, LIN52, LIN54, MYBL1, MYBL2, RBL1, RBL2, RBBP4, TFDP1 and TFDP2. The complex exists in quiescent cells where it represses cell cycle-dependent genes. It dissociates in S phase when LIN9, LIN37, LIN52 and LIN54 form a subcomplex that binds to MYBL2.

Other Names:

Protein lin-52 homolog, C14orf46

Source and Purity:

Rabbit polyclonal antibodies were produced by immunizing animals with a GST-fusion protein containing the C-terminal region of human LIN52. Antibodies were purified by affinity purification using immunogen.

Storage Buffer and Condition:

Supplied in 1 x PBS (pH 7.4), 100 ug/ml BSA, 40% Glycerol, 0.01% NaN₃. Store at -20 °C. Stable for 6 months from date of receipt.

Species Specificity:

Human, Mouse

Tested Applications:

WB: 1:1,000-1:3,000 (detect endogenous protein*)

*: The apparent protein size on WB may be different from the calculated M.W. due to modifications.

Product Data:

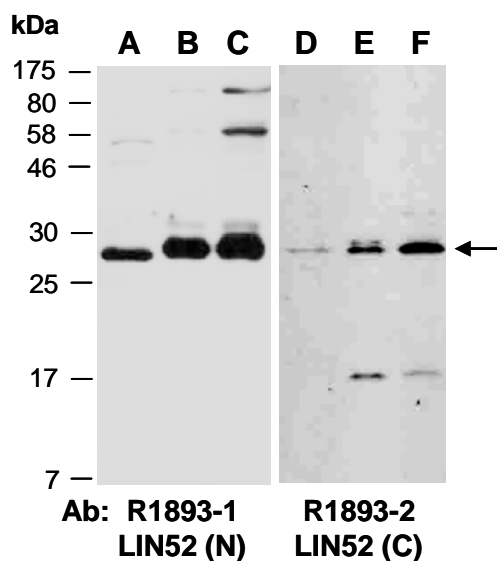


Fig 1. Western blot of total cell extracts from (A, D) mouse thymus, (B, E) human HeLa, (C, F) human Jurkat; using 2 independent Abs against 2 distinct regions of human LIN52 at RT for 2 h.