



Order: (888)-282-5810 (Phone)
(818)-707-0392 (Fax)
order@abiocode.com
Web: www.Abiocode.com

LIN52 (vPair™) Antibodies

Cat#: R1893-vp

Lot#: Refer to vial

Predicted | Observed M.W.: 13 | 28 kDa

Uniprot ID: Q52LA3

Application: WB

Quantity: 50 ul LIN52 (N) (R1893-1) Rabbit Polyclonal Antibody &

50 ul LIN52 (C) (R1893-2) Rabbit Polyclonal Antibody

Product Introduction:

vPair™ antibodies represent a pair of fully characterized antibodies that recognize two different regions of a target protein. The product is developed by Abiocode to address whether the signal observed truly represents the protein of interest, an often encountered issue in antibody-based assays. The use of a pair of fully characterized vPair™ antibodies in the same assay can validate signal specificity since vPair™ antibodies recognize two independent epitopes of the same protein. Different sets of vPair™ antibodies are developed at Abiocode to work with specific applications, including antibody arrays, Western blot, IP-Western, ChIP, IHC, and FACS.

Background:

Protein lin-52 homolog (LIN52) belongs to the lin-52 family. LIN52 is a component of the DREAM complex (also named LINC complex) which includes E2F4, E2F5, LIN9, LIN37, LIN52, LIN54, MYBL1, MYBL2, RBL1, RBL2, RBBP4, TFDP1 and TFDP2. The complex exists in quiescent cells where it represses cell cycle-dependent genes. It dissociates in S phase when LIN9, LIN37, LIN52 and LIN54 form a subcomplex that binds to MYBL2.

Other Names:

Protein lin-52 homolog, C14orf46

Source and Purity:

Rabbit polyclonal antibodies were produced by immunizing animals with a GST-fusion protein containing either the N-terminal [LIN52 (N) (R1893-1)] or the C-terminal [LIN52 (C) (R1893-2)] region of human LIN52. Antibodies were purified by affinity purification using immunogen.

Storage Buffer and Condition:

Supplied in 1 x PBS (pH 7.4), 100 ug/ml BSA, 40% Glycerol, 0.01% NaN₃. Store at -20 °C. Stable for 6 months from date of receipt.

For research use only. Not for therapeutic or diagnostic purposes.
Abiocode, Inc., 29397 Agoura Rd., Ste 106, Agoura Hills, CA 91301

Species Specificity:

Human, Mouse

Tested Applications:

WB: 1:1,000-1:3,000 (detect endogenous protein*)

*: The apparent protein size on WB may be different from the calculated M.W. due to modifications.

Product Data:

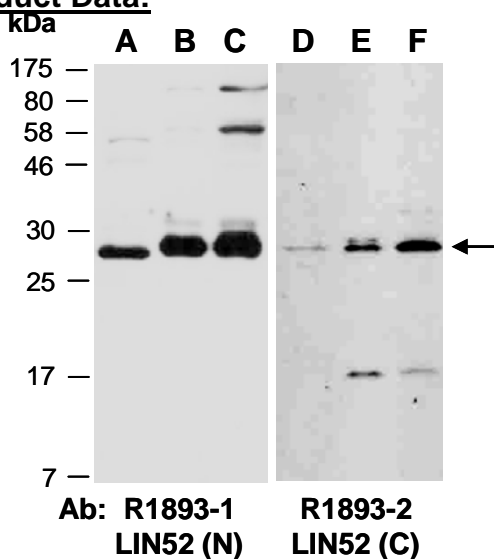


Fig 1. Western blot of total cell extracts from (A, D) mouse thymus, (B, E) human HeLa, (C, F) human Jurkat; using 2 independent Abs against 2 distinct regions of human LIN52 at RT for 2 h.