



Order: (888)-282-5810 (Phone)
(818)-707-0392 (Fax)
order@abiocode.com
Web: www.Abiocode.com

FRS2 (N) Antibody, Rabbit Polyclonal

Cat#: R1942-1

Quantity: 100 ul

Predicted | Observed M.W.: 57 | 65 kDa

Lot#: Refer to vial

Application: WB

Uniprot ID: Q8WU20

Background:

FRS2 is an adapter protein that links activated FGR and NGF receptors to downstream signaling pathways. FRS2 plays an important role in the activation of MAP kinases and in the phosphorylation of PIK3R1, the regulatory subunit of phosphatidylinositol 3-kinase, in response to ligand-mediated activation of FGFR1. FRS2 modulates signaling via SHC1 by competing for a common binding site on NTRK1. FRS2 is highly expressed in heart, brain, spleen, lung, liver, skeletal muscle, kidney and testis.

Other Names:

Fibroblast growth factor receptor substrate 2, FGFR substrate 2, FGFR-signaling adaptor SNT, Suc1-associated neurotrophic factor target 1, SNT-1, SNT1, FRS2A, FRS2alpha

Source and Purity:

Rabbit polyclonal antibodies were produced by immunizing animals with a GST-fusion protein containing the N-terminal region of human FRS2. Antibodies were purified by affinity purification using immunogen.

Storage Buffer and Condition:

Supplied in 1 x PBS (pH 7.4), 100 ug/ml BSA, 40% Glycerol, 0.01% NaN₃. Store at -20 °C. Stable for 6 months from date of receipt.

Species Specificity:

Human, Mouse

Tested Applications:

WB: 1:1,000-1:3,000 (detect endogenous protein*)

*: The apparent protein size on WB may be different from the calculated M.W. due to modifications.

Product Data:

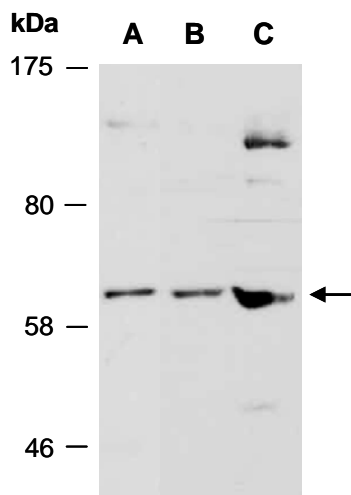


Fig 1. Western blot of total cell extracts from (A) mouse thymus, (B) human HeLa, (C) human Jurkat; using anti-FRS2 (N) (R1942-1) at RT for 2 h.