



Order: (888)-282-5810 (Phone)  
(818)-707-0392 (Fax)  
[order@abiocode.com](mailto:order@abiocode.com)  
Web: [www.Abiocode.com](http://www.Abiocode.com)

---

## ZC3H12B (C) Antibody, Rabbit Polyclonal

**Cat#: R2037-2**

**Quantity: 100 ul**

**Predicted | Observed M.W.: 93 | 120 kDa**

**Lot#: Refer to vial**

**Application: WB**

**Uniprot ID: Q5HYM0**

### **Background:**

Probable ribonuclease ZC3H12B belongs to a family of CCCH-type zinc finger proteins that are involved in the proinflammatory activation of macrophages. It may function as RNase and regulate levels of target RNA species, however, the exact function of this family member is unknown.

### **Other Names:**

Probable ribonuclease ZC3H12B, MCP-induced protein 2, Zinc finger CCCH domain-containing protein 12B, CXorf32, MCPIP2

### **Source and Purity:**

Rabbit polyclonal antibodies were produced by immunizing animals with a GST-fusion protein containing the C-terminal region of human ZC3H12B. Antibodies were purified by affinity purification using immunogen.

### **Storage Buffer and Condition:**

Supplied in 1 x PBS (pH 7.4), 100 ug/ml BSA, 40% Glycerol, 0.01% NaN<sub>3</sub>. Store at -20 °C. Stable for 6 months from date of receipt.

### **Species Specificity:**

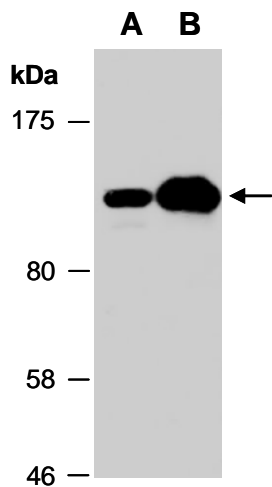
Human

### **Tested Applications:**

WB: 1:1,000-1:3,000 (detect endogenous protein\*)

\*: The apparent protein size on WB may be different from the calculated M.W. due to modifications.

**Product Data:**



**Fig 1.** Western blot of total cell extracts from (A) human HeLa, (B) human Jurkat, using anti-ZC3H12B (C) (R2037-2) at RT for 2 h.