



Order: (888)-282-5810 (Phone)  
(818)-707-0392 (Fax)  
[order@abiocode.com](mailto:order@abiocode.com)  
Web: [www.Abiocode.com](http://www.Abiocode.com)

---

## MAP3K1 (C2) Antibody, Rabbit Polyclonal

**Cat#:** R1281-2

**Quantity:** 100 ul

**Predicted | Observed M.W.:** 164 kDa

**Lot#:** Refer to vial

**Application:** WB

**Uniprot ID:** Q13233

### **Background:**

MAP3K1 is a component of a protein kinase signal transduction cascade. MAP3K1 activates the ERK and JNK kinase pathways by phosphorylation of MAP2K1 and MAP2K4. MAP3K1 activates CHUK and IKBKB, the central protein kinases of the NF-kappa-B pathway. Defects in MAP3K1 are the cause of 46,XY sex reversal type 6.

### **Other Names:**

Mitogen-activated protein kinase kinase kinase 1, MAPK/ERK kinase kinase 1, MEK kinase 1, MAPKKK1, MEKK, MEKK1

### **Source and Purity:**

Rabbit polyclonal antibodies were produced by immunizing animals with a GST-fusion protein containing the C-terminal region of human MAP3K1. Antibodies were purified by affinity purification using immunogen.

### **Storage Buffer and Condition:**

Supplied in 1 x PBS (pH 7.4), 100 ug/ml BSA, 40% Glycerol, 0.01% NaN<sub>3</sub>. Store at -20 °C. Stable for 6 months from date of receipt.

### **Species Specificity:**

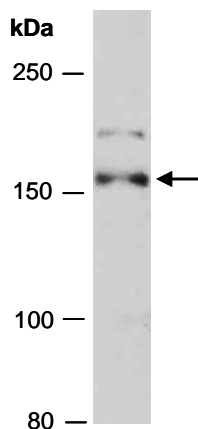
Human

### **Tested Applications:**

WB: 1:1,000-1:3,000 (detect endogenous protein\*)

\*: The apparent protein size on WB may be different from the calculated M.W. due to modifications.

**Product Data:**



**Fig 1.** Western blot of total cell extracts from human HeLa; using anti-MAP3K1 (C2) (R1281-2) at RT for 2 h.